

Dunhills Limited

SIDECAR CHASSIS
COMPONENTS & FITTINGS

Repairs

to

Sidecar Chassis

WE cater specially for Sidecar Chassis Repair Work of all kinds, carrying out the repairs quickly, efficiently, reliably and cheaply. The work is done in our own factory under expert supervision.

Estimates given gladly after examination of the job.

All Dunhill Sidecars and Sidecar Fittings are manufactured in our own Works, which are specially laid out for this class of work in which we specialise. We are in a position to undertake repairs to chassis and motor cycle frames of every description, and to give prompt delivery at reasonable prices

BARNSTORMERS.CO.NZ

SIDECAR CHASSIS AND COMPONENTS



WHEELS

26 by 2½ in., or 26 by 2½ in., black enamelled, built up with No. 2 British Hub and 12 g. Spokes	Price each	33/4
The same built up with No. 3B dust and waterproof Hub ..	"	38/9
The same built up with No. 30 heavy Hub, with ½ in. withdrawable Spindle	"	38/9
26 by 3 in. Wheels, built up with No. 3B Hub and 10 g. Spokes	Price	42/11
Ditto with No. 30 Hub	"	42/11
28 by 2½ in. Wheels, built up with No. 3B Hub and 10 g. Spokes	"	44/7
Ditto with No. 30 Hub	"	44/7
28 by 3 in. Wheels, built up with No. 3B Hub	"	42/11
Ditto with No. 30 Hub	"	42/11

SPOKES.

(NIPPLES AND WASHERS.)

12 g. by 10⅞ in. long, rolled thread, for 26 by 2½ in. wheels, with Nipples and Washers to suit.

Price per gross, 15/6

12 g. by 10⅞ in. long, rolled thread, for 26 by 2½ in. wheels, with Nipples and Washers.

Price per gross, 15/6

10 g. by 12 in. long, unscrewed, with Nipples and Washers.

Price per gross, 20/-

RIMS.

Price each

26 by 2½ in., drilled 40 holes	6/3
26 by 2½ in. " "	6/3
26 by 3 in. " "	6/8
28 by 2½ in. " "	6/8
28 by 3 in. " "	6/8

Best nickel plating 4/6 each extra

DUNHILLS LTD., 359-361 EUSTON RD., N.W.1.



MUDGUARDS

Complete Mudguards made up with 4½ in. blade and enamelled best black	-	-	17/6
Ditto with wide valance	-	-	22/-

MUDGUARD BLADES.

4½ in. plain blades, bright	Price 3/- each
4½ in. blades, with valance, bright ...	Price 6/- each
5 in. blades, with valance, bright ...	Price 7/- each

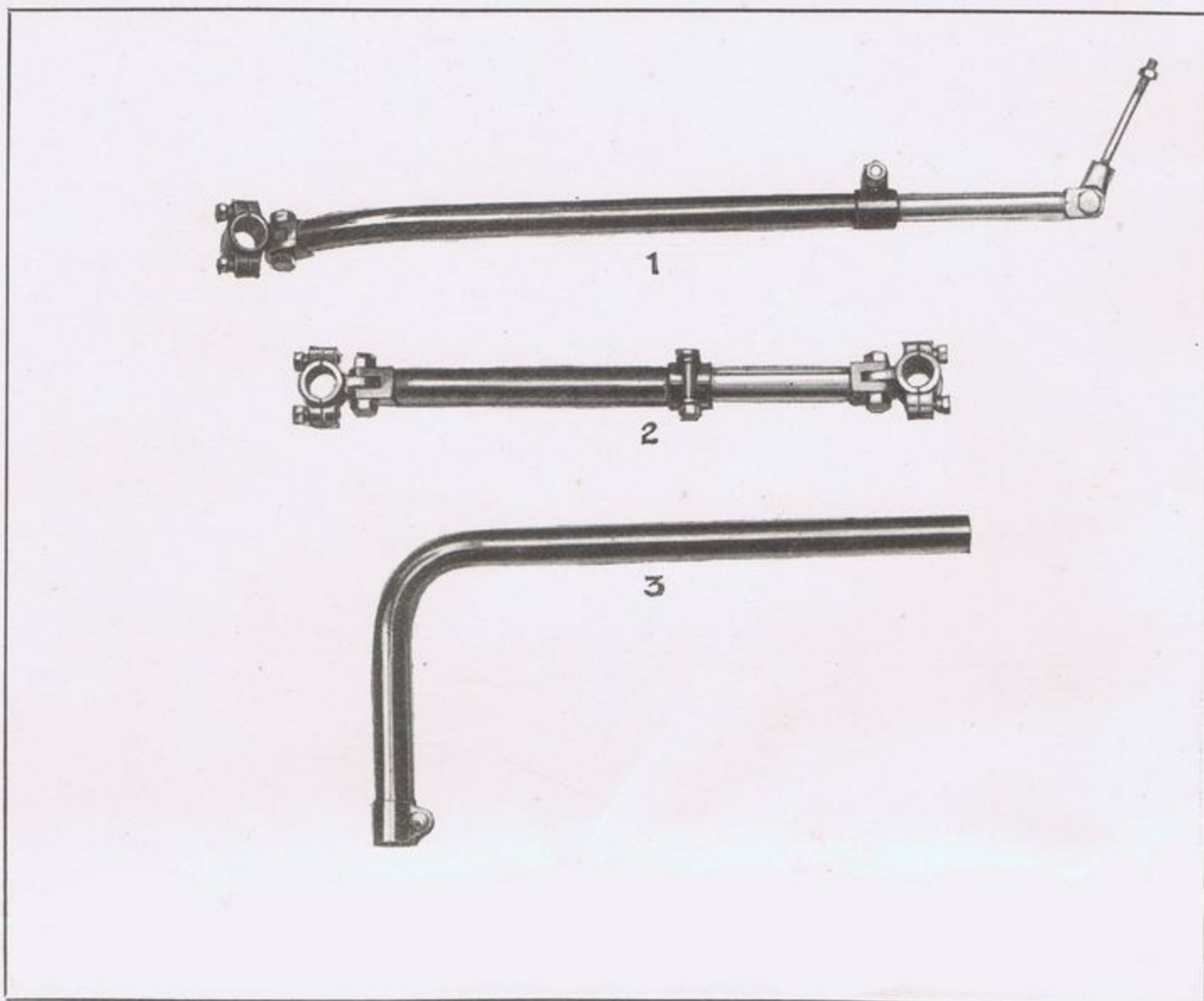
BEARER PLATES.

Complete with nuts, any length
Price **10/6** per pair

SIDECAR LAMP BRACKET.

The "Dunhill" Sidecar Lamp Bracket, with reversible tang. Lamp can be swivelled to any angle. Finished in best black enamel ... Price each **2/6**

SIDECAR CHASSIS AND COMPONENTS



CONNECTIONS

No. 1. Rear Sidecar Connection, complete with seat bolt to suit any make machine.

Price 22/9

All black finish, No. 1 19/9

No. 3. Front Sidecar Elbow, with bolt. Price 8/-

No. 2. Auxiliary Sidecar Attachment, with either $1\frac{1}{8}$ in. or $1\frac{1}{4}$ in. clips. Price 16/8

No. 2 13/8

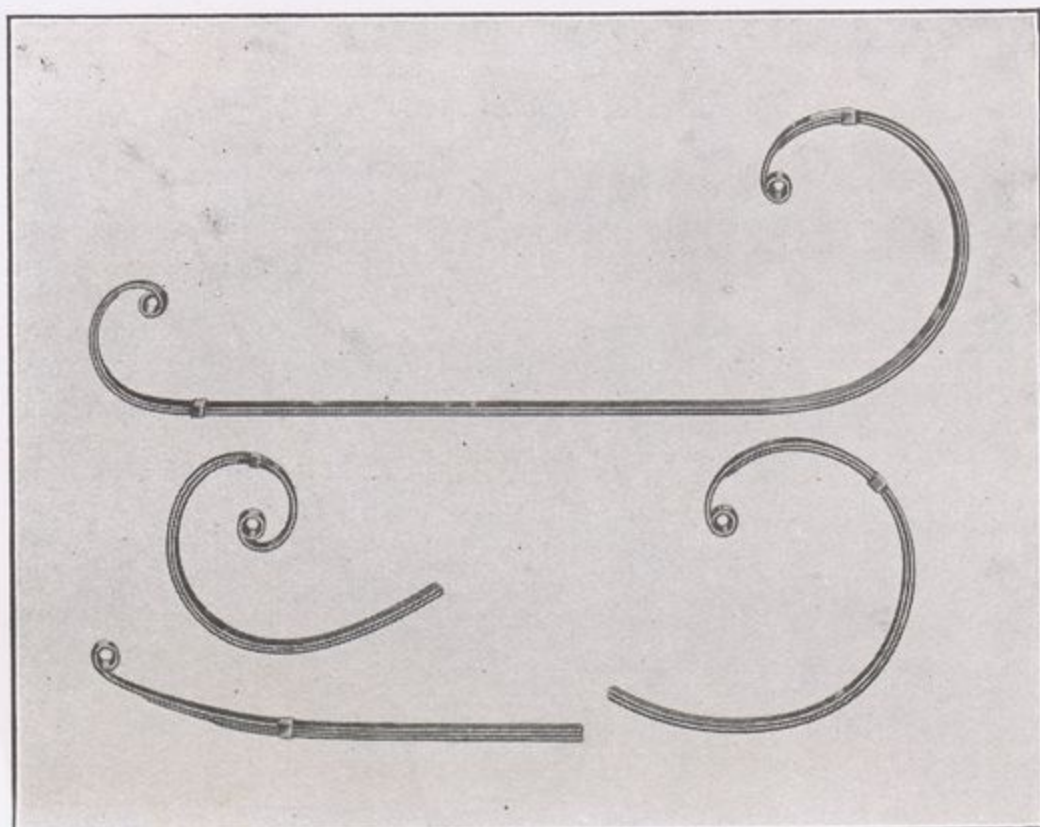
STEEL TUBE

Solid drawn steel tube for repairs to Sidecar Chassis and Motor Cycle Frames at current prices.

Definite quotations on request.

Please state full particulars when enquiring.

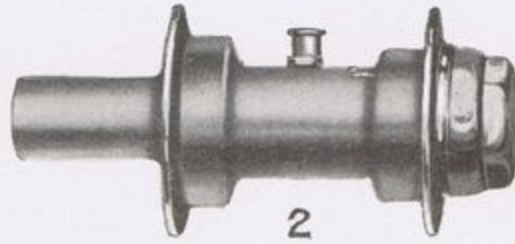
SIDECAR CHASSIS AND COMPONENTS



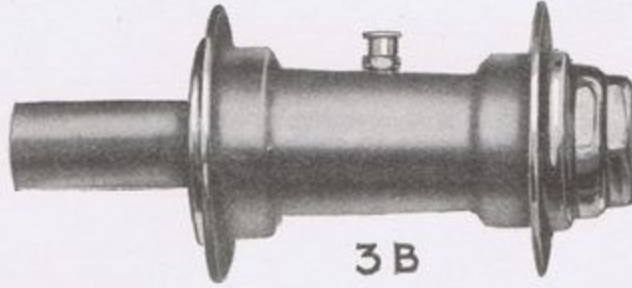
SPRINGS

	£	s.	d.	
Double "Cee" Spring, Two leaf -	1	11	3	} Enamelling 5/- extra.
" " " Three leaf -	1	16	3	
Large Single "Cee" Spring, Two leaf -		19	6	} Enamelling 4/- extra.
" " " " Three leaf	1	4	0	
Small " " " Two leaf		11	3	
Quarter-elliptical Spring, Three leaf -		12	6	

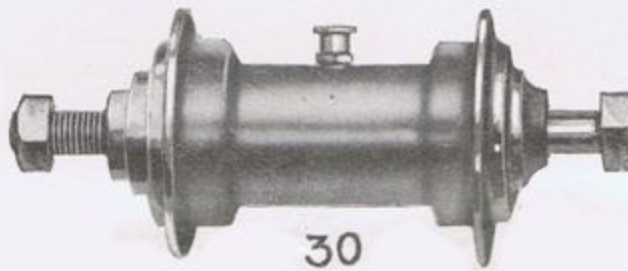
SIDECAR CHASSIS AND COMPONENTS



2



3B



30

HUBS.

The BRITISH, No. 2. Suitable for light and medium weight Sidecars - Price **13/9** each
 The BRITISH, No. 3b. Suitable for heavy work. Dust and waterproof Price **18/6** each
 The BRITISH, No. 30. Suitable for Sidecars with wheel supported both sides. Has $\frac{1}{2}$ in. withdrawable spindle - - Price **17/-** each

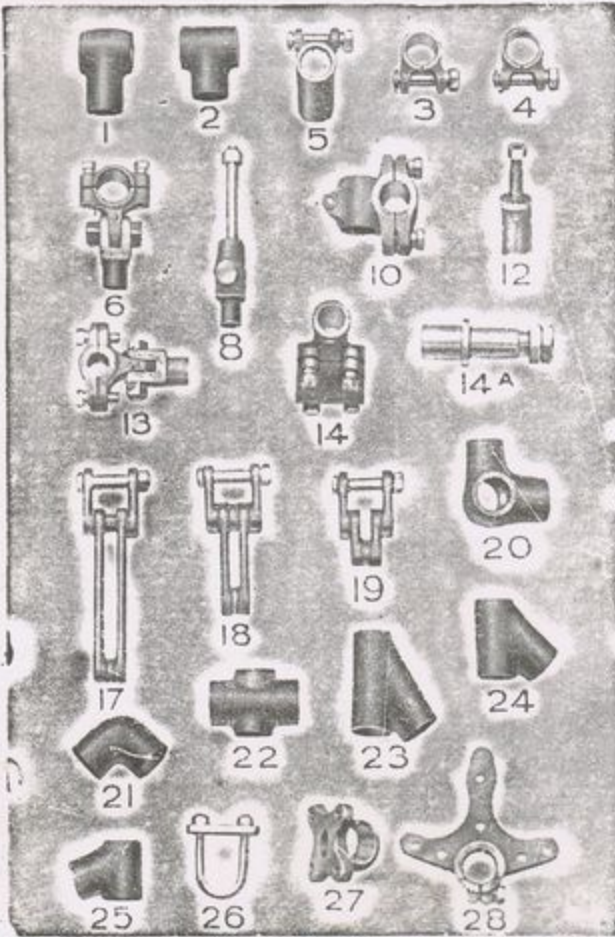
SPARE PARTS FOR HUBS.

		Per pair
Spindle, complete with cones and nut for 3B Hub ..	8/9	Cones for No. 3B Hub .. 3/2
Do. Do. for 30 Hub ..	10/-	Do. 30 .. 3/2
Do. Do. for 2 Hub ..	6/1	Do. 2 .. 2/4
Taper Spindle for Dunhill A36 Chassis, complete with cones and nut ..	10/5	Cups for No. 3B .. 2/-
$\frac{3}{4}$ in. Screwed end Spindle for do. (1920 Model) do. ..	10/5	Do. 30 .. 2/-
Do. Do. for A35 Chassis ..	8/9	Do. 2 .. 2/-
		Hub Caps, plated .. each 2/-

DUNHILLS LTD., 359-361 EUSTON RD., N.W.1.

SIDECAR CHASSIS AND COMPONENTS

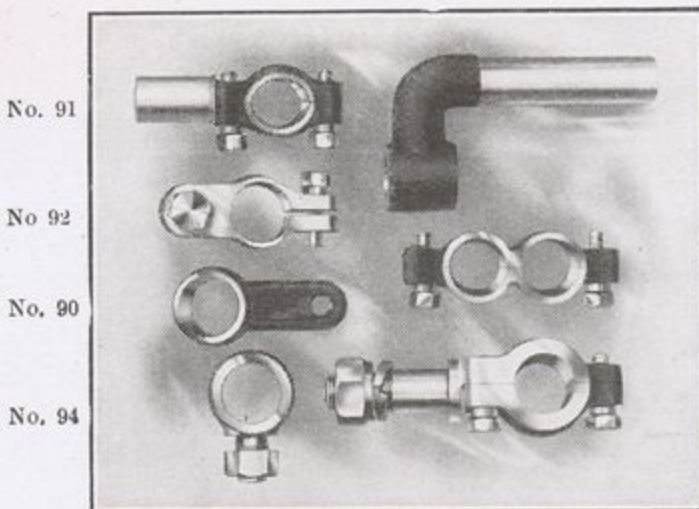
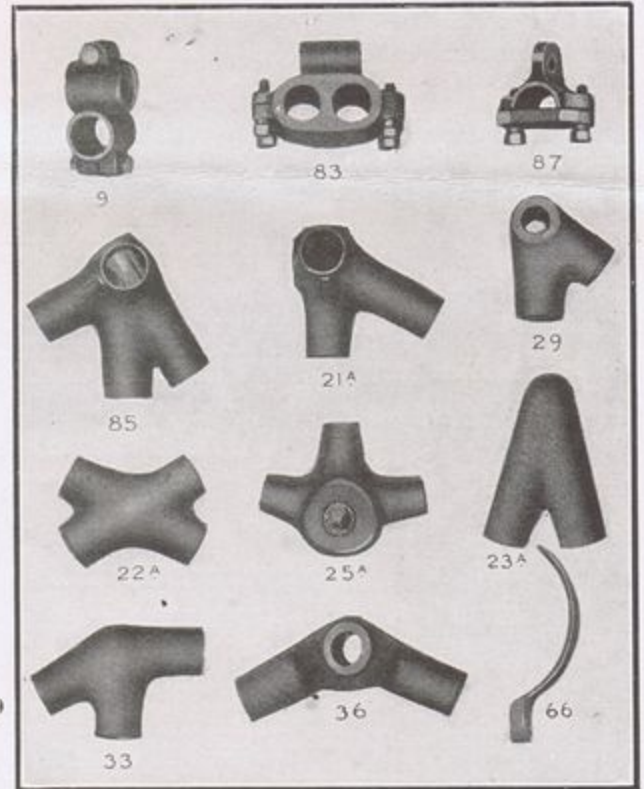
SIDECAR LUG FITTINGS



1	—1½ by 1½ in. Heavy T Lugs	..	Each	11d.
3	—1½ in. Plain Clip, with bolt and nut	..	"	1/3
4	—1 in. Plain Clip, with bolt and nut	..	"	1/3
5	—1 in. Clip T, with bolt	..	"	2/6
6	—1½ in. Halved Clip, with yoke end	..	"	4/6
7	—1½ in. Halved Clip, with yoke end	..	"	4/8
8	—Seat Connection, yoke and bolt	..	"	4/2
10	—1½ by 1½ in. Double Halved Clip	..	"	6/6
11	—1½ by 1½ in. Double Halved Clip	..	"	7/-
13	—Rear Connection Clip, with yoke 7/8 in. round	..	"	5/6
14	—Front Connection Clip, 1½ by 7/8 in.	..	"	6/-
14A	—Spindle for same	..	"	6/3
15	—Front Connection Clip 1½ by 7/8 in.	..	"	6/-
16	—Front Connection Clip 1½ by 7/8 in.	..	"	8/6
18	—4 in. Spring Shackles	..	Per pair	4/2
19	—2 in. Spring Shackles	..	"	3/9
19A	—3 in. Spring Shackles	..	"	4/-
20	—4-way Lug 1½ in. all ways	..	Each	1/11
21	—1½ in. Elbow	..	"	11d.
22	—1 in. Cross Lug	..	"	1/8
23	—1 in. Angle Lug 32°	..	"	1/11
24	—1 in. Angle Lug 45°	..	"	1/8
25	—1 in. Angle Lug 60°	..	"	1/6
26	—U Clip, with plate and nuts	..	"	8d.
27	—1½ in. Spring Clip	..	"	2/4
27A	—Plates and bolts for No. 27	..	"	2/6
28	—Mudguard Stay Clip, 1½ in.	..	"	2/6

A large variety of Special Lugs of every description in Stock.

9	—1½ by 1½ in. Double Clip, with bolts	..	3/-
21A	—1½ in. 3-way Frame Lug	..	5/5
22A	—55° 1½ in. Cross Lug	..	4/2
23A	—1½ in. V Lug	..	4/2
25A	—7/8 in. Mudguard Stay Clip	..	10/-
29	—1½ by 7/8 in. Axle Lug	..	3/9
33	—1½ in. 3-way Branch Elbow	..	3/9
36	—1½ in. Wheel Lug	..	4/5
66	—4½ in. Mudguard Bridge	..	8d.
83	—Front Connection Clip for Indian Scout	..	10/-
85	—5-way 1½ in. Frame Lug	..	6/11
85	—1½ in. "Dee" Clip	..	5/-
87	—1½ in. "Dee" Clip	..	5/-



No. 89

No. 91

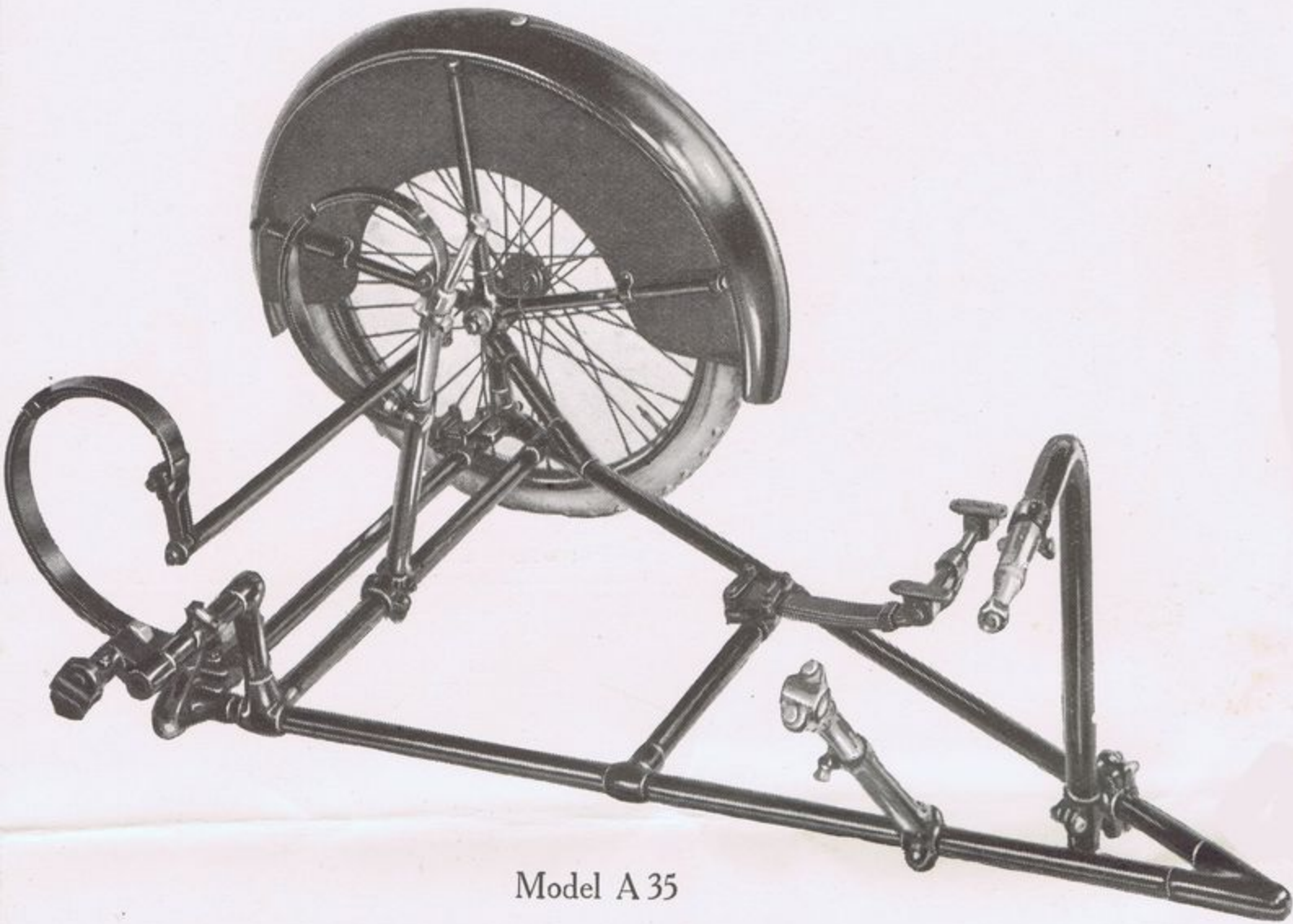
No. 92

No. 90

No. 94

88	—Front Coupling Clip and Spindle for 1½ in., 1½ in. or 1½ in. tube. Made from drop steel forging	..	Each	7/6
89	—Arm for No. 88 Clip, 7/8 in. or 5/16 in. diam. Made from drop steel forging	..	"	4/6
90	—1½ in. Lug, with tang	..	"	1/6
91	—Light front coupling, to fit 1½ in. diam. tube. Made from drop steel forging	..	"	4/-
92	—1½ in. Split Clip, with fork	..	"	2/11
93	—1½ in. Double Parallel Clip	..	"	3/-
94	—Lug, with 5/8 in. stud. 1½ in. or 1½ in. dia. bore. Made from drop steel forging	..	"	2/1

DUNHILLS PATENT TRIANGULAR CHASSIS



Model A 35

UNDERSLUNG LIGHT-WEIGHT CHASSIS.

THIS is an exceptionally light underslung Chassis embodying, of course, our patented principle of construction, which gives the greatest possible strength and rigidity combined with minimum weight. There is no possibility of frame distortion. It affords a low and yet comfortable riding position and is well sprung, having large "Cee" springs at rear and a semi-elliptical leaf spring in front. These are clearly shown in our illustration above.

The Chassis is made from the best quality solid drawn steel tube, with taper section mudguard stays of similar material, giving strength and freedom from rattle. The mudguards are easily detachable.

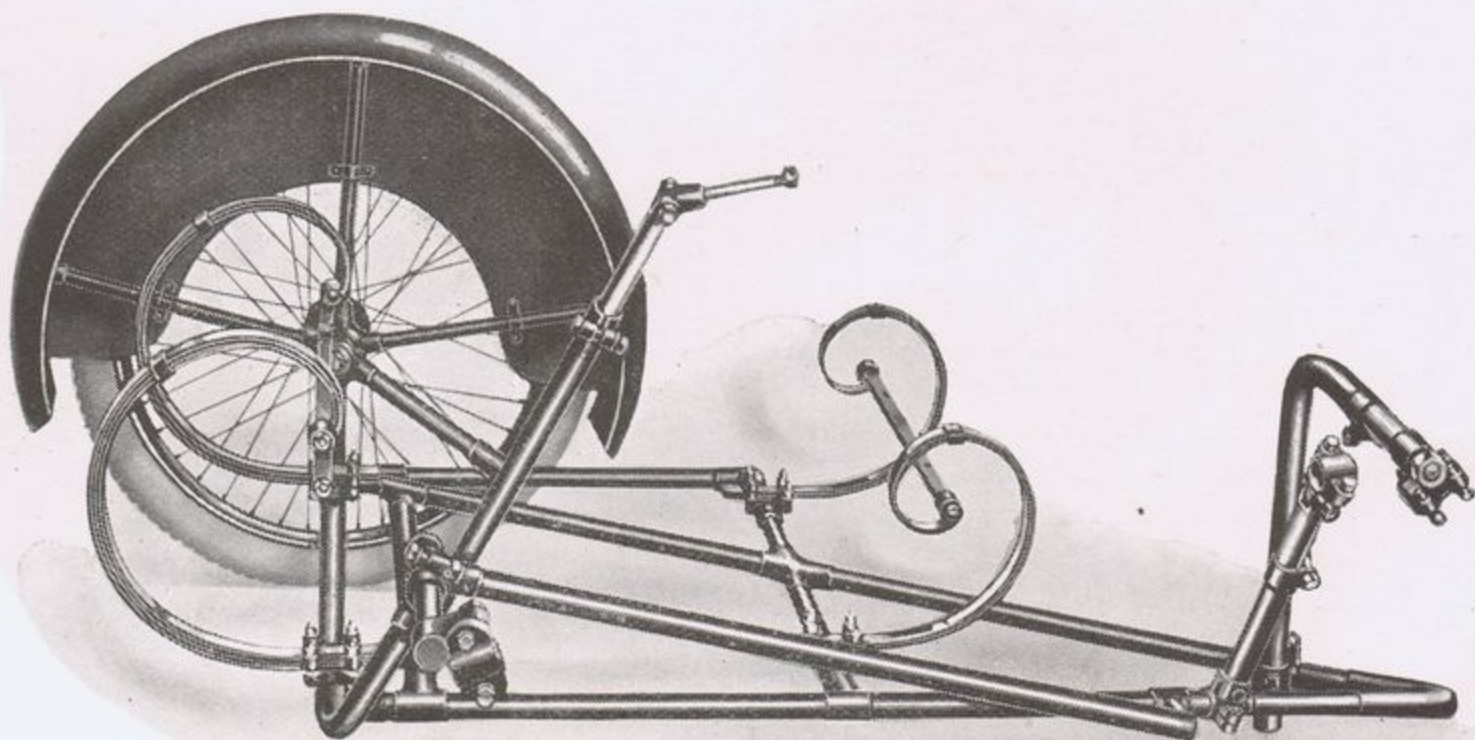
The four point attachment fittings are machined from the solid steel bar, eliminating all risk of breakage at these points. A 26 in. rim is standard.

The finish is best black enamel with wheel and attachment parts heavily plated. All-black finish may be had if desired, and the Chassis can be supplied to take either a light coach body or a torpedo shape.

Chassis only, less tyre, **£12** each.

DUNHILLS LTD., 359-361 EUSTON RD., N.W.1.

DUNHILLS PATENT TRIANGULAR CHASSIS



Model A 36

UNDERSLUNG TOURING CHASSIS.

CONSTRUCTED on our patented principle, this Chassis is unexcelled for all-round touring work. It is built up of best quality steel tube and well sprung on three-leaf double "Cee" springs, and is strong and comfortable without being unduly heavy.

We are fixing a special hub with bearings of ample proportions, which is dust and waterproof. The mudguard (fitted with steel tubular stays of taper section) is wide and well valanced, and is quickly detachable by removing one nut only. The hub spindle is not brazed to frame, and is therefore full strength, but can be easily removed and replaced by a new one when necessary.

A four point attachment is supplied as standard, with fittings machined from solid steel bar. The type of clips used, when once properly fixed, prevents any slip taking place.

The Chassis is finished in best black enamel with wheel and attachments heavily plated, but all-black finish can be had if desired. A 26 by 2½ in. rim is fitted as standard. This Chassis will take any standard type of coach-built body.

Chassis only, less tyre, **£15** each.

DUNHILLS LTD., 359-361 EUSTON RD., N.W.1.

Sidecar Chassis and Motor Cycle Frame Repairs.

WHEN considering the question of repairs it is always, without exception, advisable to go to the firm who do their own work, and thus save time and money by having the job handled by skilled workmen who are specialists in this class of work.

As will be seen by the illustrations on page 11, "Dunhills" have very efficiently equipped workshops, and can undertake, at an exceptionally reasonable figure :—

All classes of tube work, bending, brazing, etc.
Turning, fitting, screw cutting and wheel work.
Frame repairs of every description.

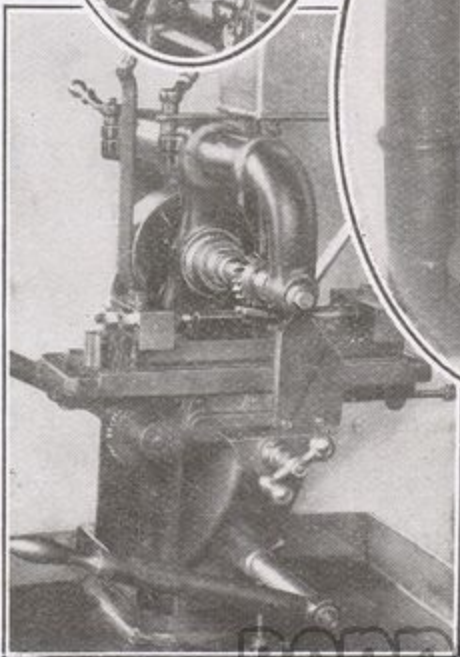
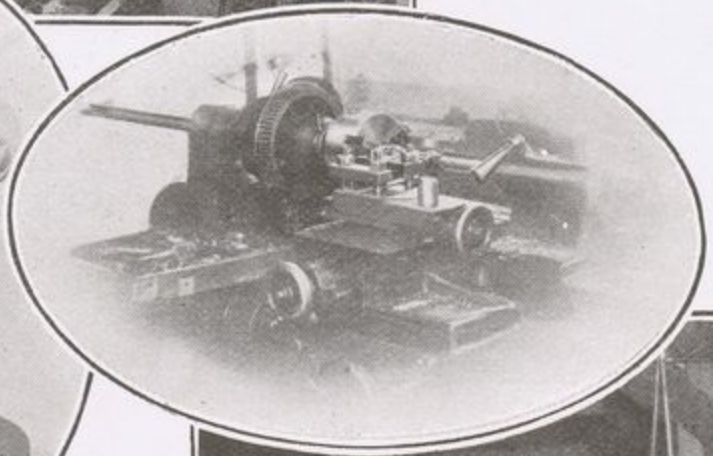
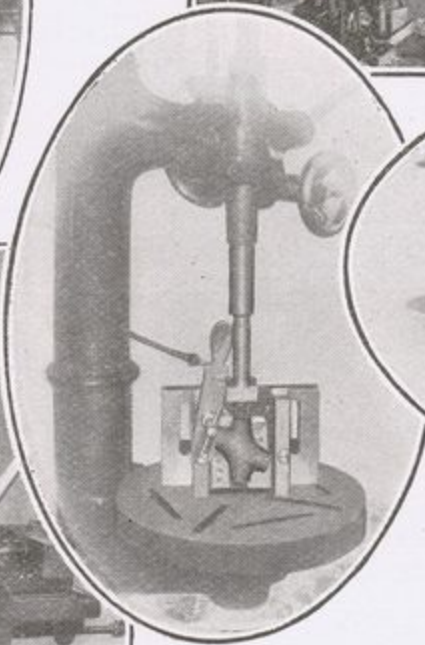
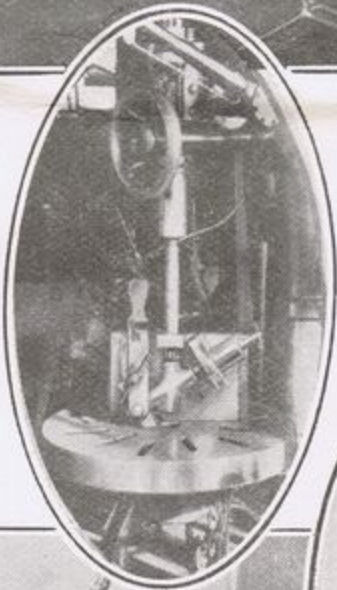
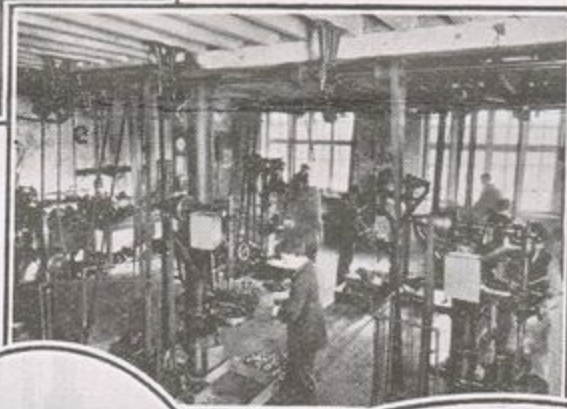
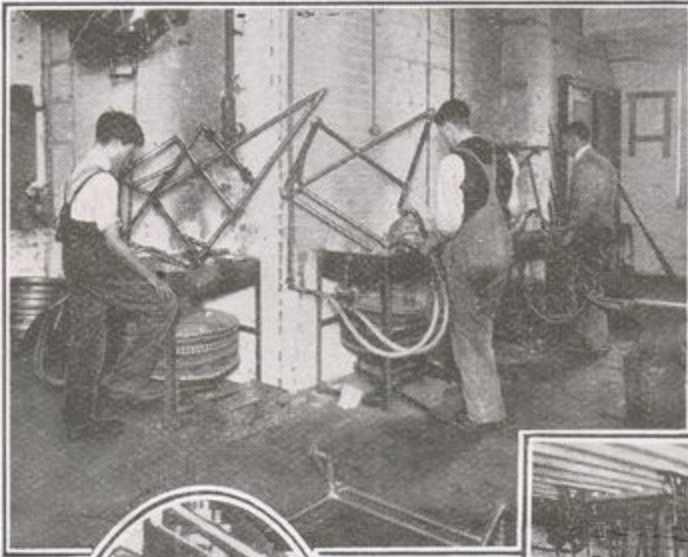
Enamelling and plating chassis and machine frames.

Quotations given by return, and work executed with the utmost despatch.

Special fittings made to drawings or instructions.

WHERE DUNHILL CHASSIS & COMPONENTS ARE MADE.

FOR some years now the manufacture of DUNHILL Sidecar Chassis and Chassis Components have been carried out entirely in our own workshops at Euston Road. The factory has been laid out with the most up-to-date and efficient machinery for this class of work, and our plan of being able to turn out quickly and cheaply supplies of reliable Sidecar Components has been fully realised. Our factory is the largest of its kind in London.



Views of the DUNHILL Frame Room and Machine Room, showing Frames and Components in various stages of manufacture.