

Sidecars for 1935



A PERSONAL MESSAGE

1912

*T. F. WATSON,
founder of the
Company, with
the
First Watsonian
Sidecar.*

It may or may not interest you to know a little of the history of our Company, but we feel that we cannot let this, the entry of our 23rd year in business, pass without some comment. We have just completed a record year, which has necessitated further extensions to our new modern factory which is the finest equipped and largest works devoted to the Sidecar industry in the world.

In 1912 the Sidecar illustrated above was patented and acclaimed the most brilliant design of its time. It incorporated a folding chassis and body, and was the forerunner of the modern "Kwikfit" Chassis. We rapidly progressed by the introduction of entirely new, and at that time, unorthodox designs. In 1916 we were closed down. 1919 saw us gathering together our depleted Staff and getting quickly into production again. Prices gradually rose until the peak was reached in 1921 ; 30 guineas was an average price for single seater sidecar without a hood or screen, or any of the refinements included in a modern sidecar. It is therefore with a certain amount of pride that we present to you our 1935 programme with models from £10 18 0.

1935

*T. F. WATSON,
Managing Director.*



SIDECAR SPECIALISTS for
TWENTY-TWO YEARS.

Barnstormers.co.nz

Watsonian
SIDECARS



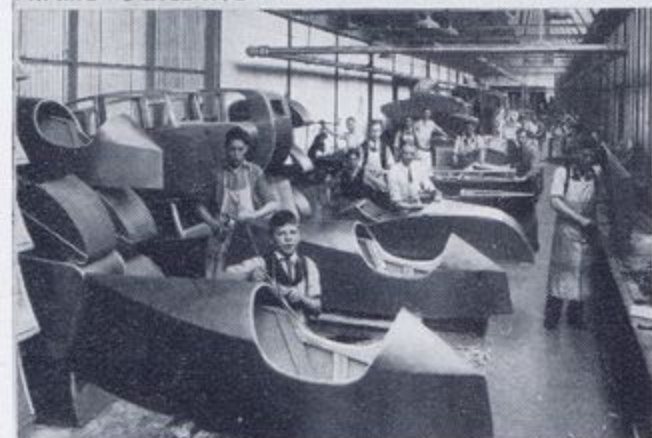
FRAME BUILDING



FRONTAGE TO WORKS



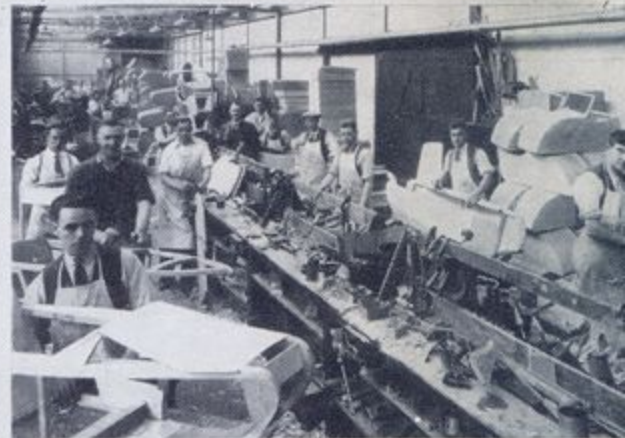
MACHINE SHOP



PANELLING SHOP



BODY FITTING SHOP



BODY ASSEMBLING



CHASSIS BUILDING

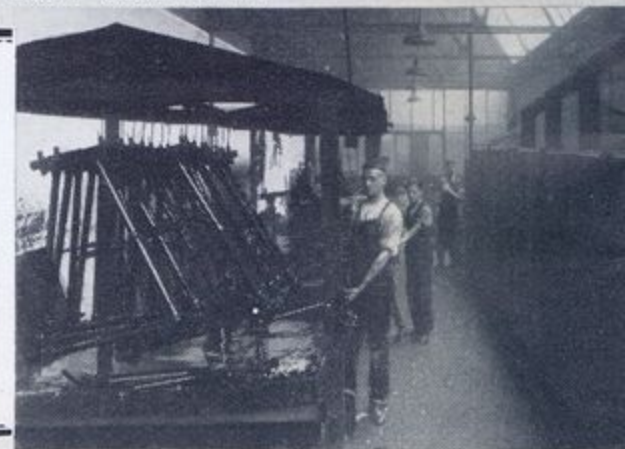
A FEW DEPARTMENTS OF OUR
MODERN FACTORY EQUIPPED
AS SPECIALISTS FOR THE
PRODUCTION OF SIDECARS

Watsonian
SIDECARS

Albion Road, Greet, BIRMINGHAM 11.

Phone: VICTORIA 1927 & 1928.

Telegram: "WATSONIAN" BIRMINGHAM



ENAMELLING SHOP



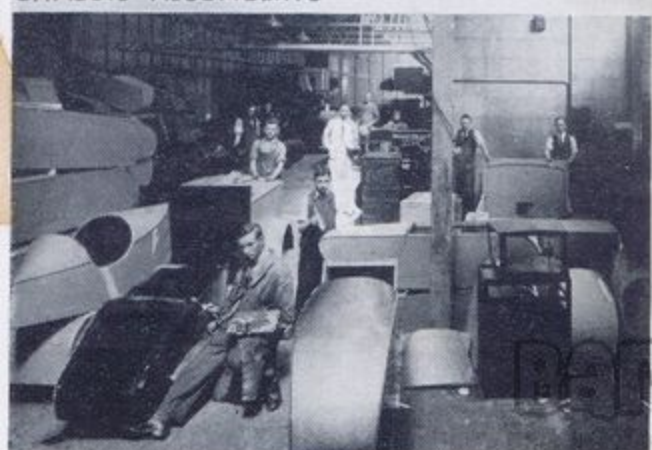
CHASSIS ASSEMBLING



WINDSCREEN AND HOOD DPT.



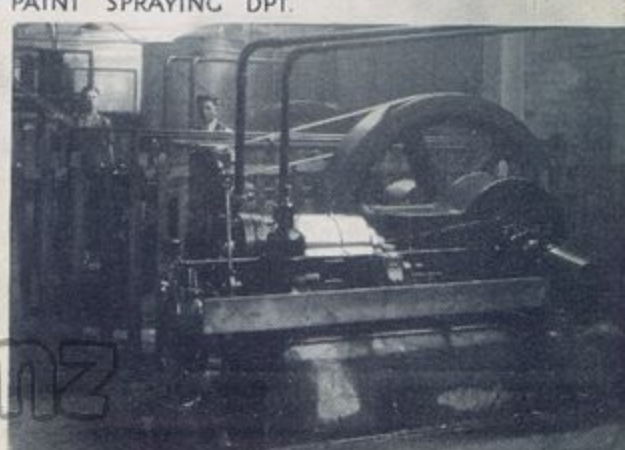
PAINT SPRAYING DPT.



PAINT SHOP



BODY FINISHING



POWER PLANT

DO YOU KNOW?

INSURANCE RATES.

A reduction of 50% in premium is offered by the leading Insurance Companies to Combination Drivers over Pillion Drivers. Think what this saves you over 3 years, almost pays for the Sidecar, doesn't it?

SAFETY.

The Sidecar is the safest vehicle on the road primarily due to its immunity from skidding. This has been proved consistently by statistics which are published from time to time.

ECONOMY.

A Sidecar outfit is the cheapest form of mechanical transport on the road, taking costs per head. A modern Motor Cycle is capable of 60 to 70 m.p.g. with a fully loaded Sidecar, and the annual tax has been reduced from January 1st, 1935 to £3 0 0 p.a.

PERFORMANCE.

The difference between the performances of a modern Sidecar outfit as compared with that of a solo with pillion passenger is negligible, although it is advisable to lower the gear on a small capacity machine, which of course slightly reduces the maximum speed.

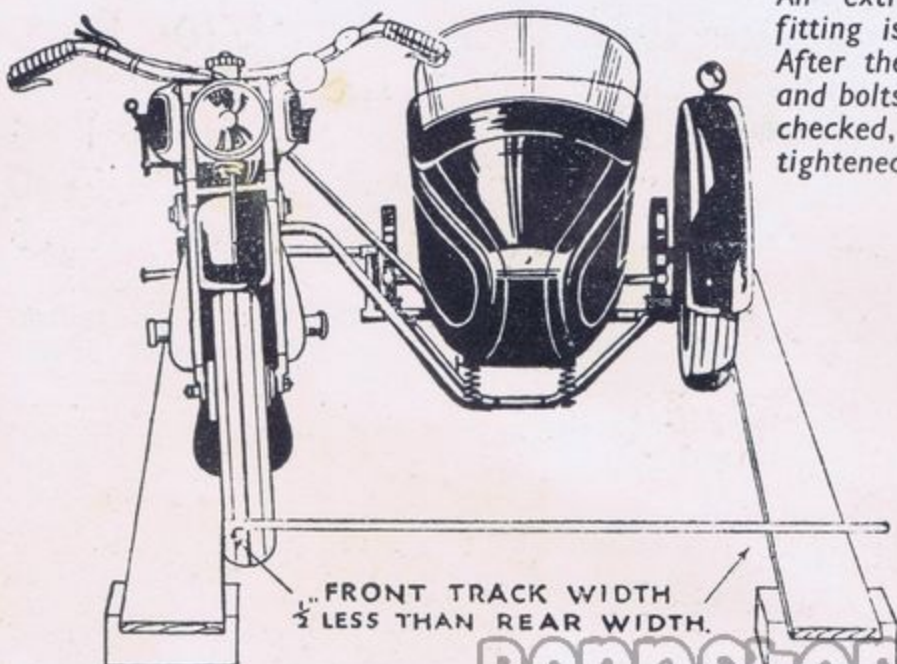
ALIGNMENT.

It is absolutely imperative that your outfit is in correct alignment, otherwise your safety and the performance and economy of the machine will be at stake, an incorrectly aligned Sidecar throws abnormal strains on to the frame of the machine and sidecar chassis.

CORRECT ALIGNMENT.

Is attained by placing straight edges (ordinary planks will do) one either side of the combination, as per illustration, and adjusting by the telescopic tubes and steel fittings at front and rear until parallel or about $\frac{1}{2}$ " narrower at front, with machine leaning slightly outward on level floor. Keep the Sidecar close to the Motor Cycle, the narrower the track the easier it is for the engine. Tighten all bolts and lastly fit 4th point arm if supplied.

When the combination is fitted up, loosen nuts as if to take off the sidecar. If any bolts are difficult to draw, or any attachment springs apart, there is undue strain somewhere. This must be traced and rectified.



An extra hour spent on fitting is never wasted. After the first run all nuts and bolts should be carefully checked, and, if necessary, tightened.

Barnstormers.co.nz

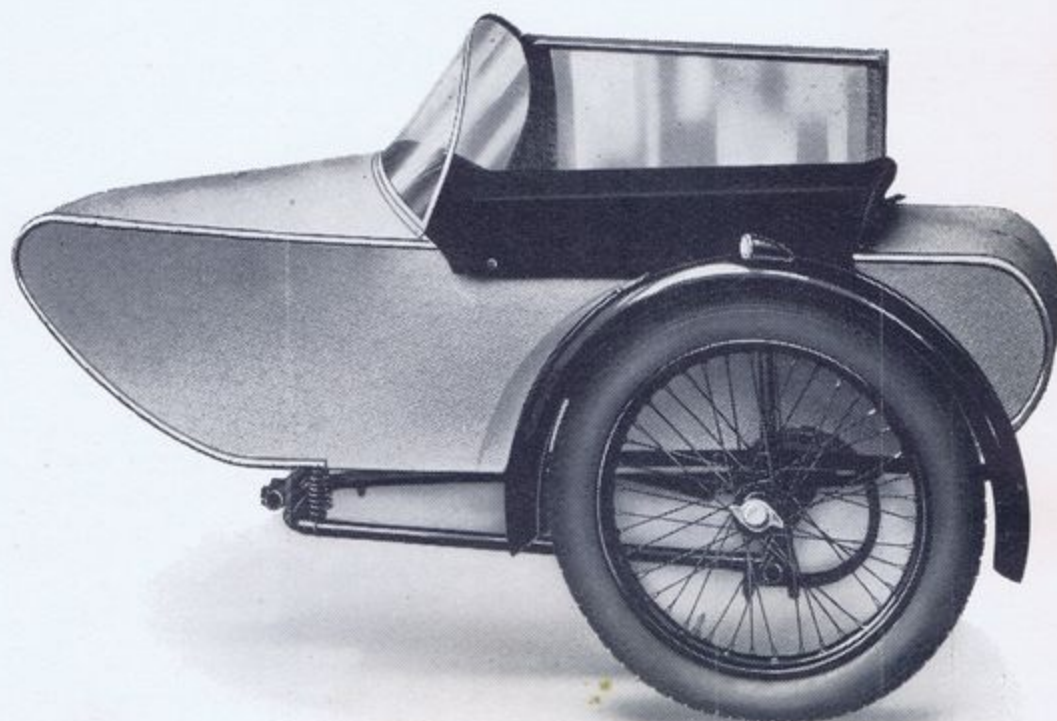
Watsonian
SIDECARS

GREET MODEL

THIS outfit is a splendid investment for the person who requires a light semi-sports sidecar at a low price. Built of selected white wood, the panelling is of ply-wood covered with fabric (colour samples sent on request) neatly finished with polished aluminium beads. Comfort is ensured by lace spring seat, upholstered in attractive finishes to harmonise with body colour scheme. Fixed celluloid windscreen and side screen with coverall waterproof apron form standard equipment.

A door can be fitted to this model for those who require this extra at a charge of 5/-

Length overall, 70 in.; Length inside, 50 in.; Seat, 15½ x 18 in.; Depth of back, 19 in.

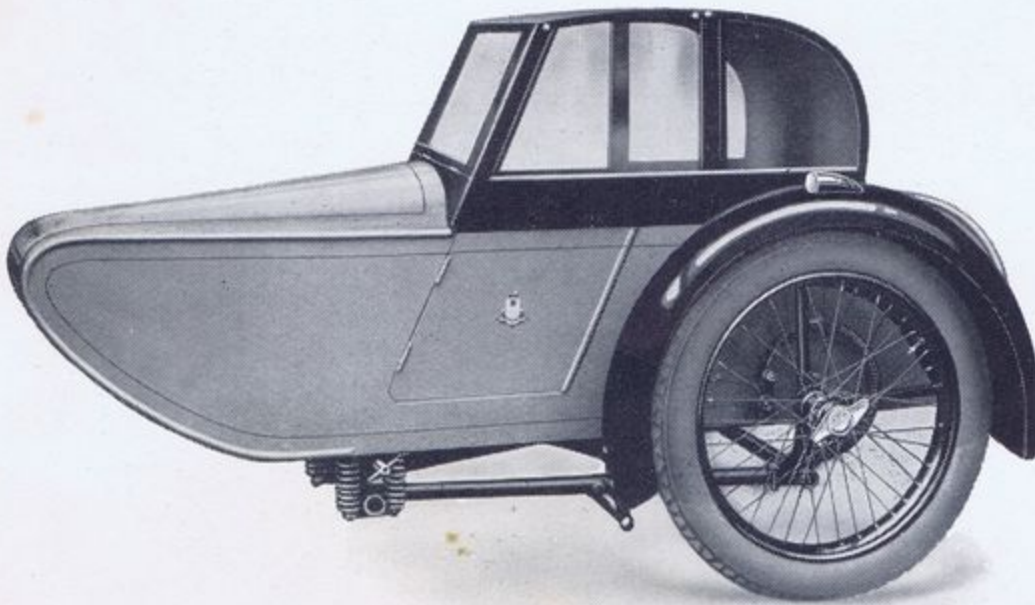


Code.			
Greonx.	Greet on " X20 " Chassis, as illustrated	£10	18 0
Greonv.	Greet on " V21 " Chassis	£12	0 0
Greonu.	Greet on Ariel Chassis	£13	1 6
Greonj.	Greet on " J21 " " Kwikfit " Chassis	£14	7 0
Gree.	Greet Body only	£4	10 6

(See pages 18 and 21 for Chassis Specification).

Crate Free : Carriage Paid
any Station Great Britain

ALBION MODEL



AN elegant all-weather or open Sportsman's Coupe. A hinged canopy is fitted having celluloid windows, the rear panels of which open. Detachable waterproof Hood Cover is provided which gives complete weather protection.

A spacious rear locker is fitted, access to which is secured without disturbing the passenger. Body is coach-built and painted to a choice of smart colours. Lace spring upholstery with fine quality leather cloth to harmonise.

Length overall, 72 in.; Length inside, 50 in.; Seat, 15½ x 20 in.; Depth of back, 19 in.

Code.				
Albonx.	Albion on " X20 " Chassis	£14 12 6
Albonv.	Albion on " V21 " Chassis as illustrated			£15 14 6
Albonj.	Albion on " J21 " " Kwikfit " Chassis			£18 1 6
Alb.	Albion Body only	£8 5 0

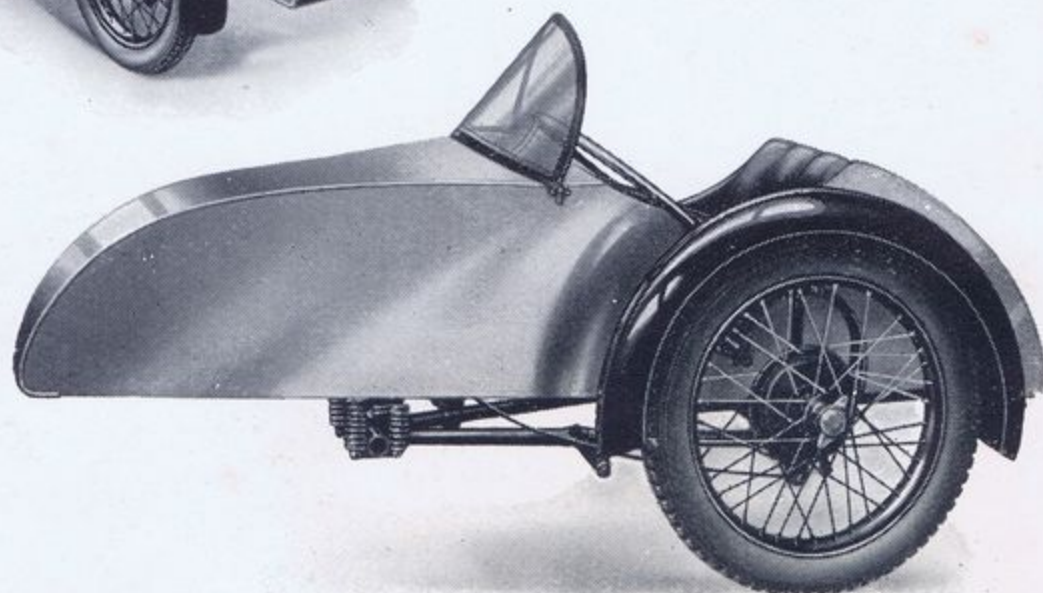
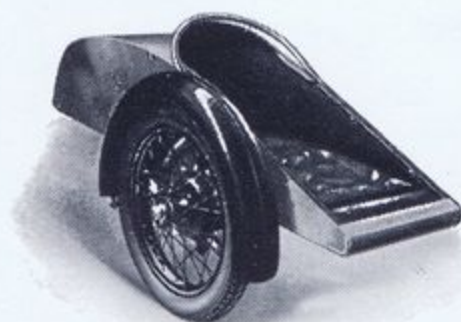
(See pages 18 and 21 for Chassis Specification).

Crate Free : Carriage Paid
any Station Great Britain

SPEED MODEL

THIS beautifully stream-lined coach-painted Super Sports Sidecar has been specially designed for racing and competition purposes. The novel construction includes a quickly detachable rear back rest and locker which is fixed by suitable catches. By means of this device together with wind-screen which is also detachable, the Body can be used as a fast touring or competition attachment and in a moment can be converted into a racing or grass track outfit. It is eminently suited to the requirements of the Clubman and enthusiast.

Length overall, 79 in. ; Length inside, 58 in. ; Seat, 15 x 18 in. ; Depth of back, 18 in.



Code.				
Sponx.	Speed Model, on " X20 " Chassis	...	£13	15 0
Sponv.	Speed Model on " V21 " Chassis	...	£14	17 0
Sponj.	Speed Model on " J21 " Chassis	...	£17	14 0
Spona.	Speed Model on Ariel Triangulated Chassis	£15	18 6
Sponc.	Speed Model as illustrated on Competition Chassis	£16	6 0
Spo.	Body only	£7	7 6
No Extra for Aluminium Panels.				

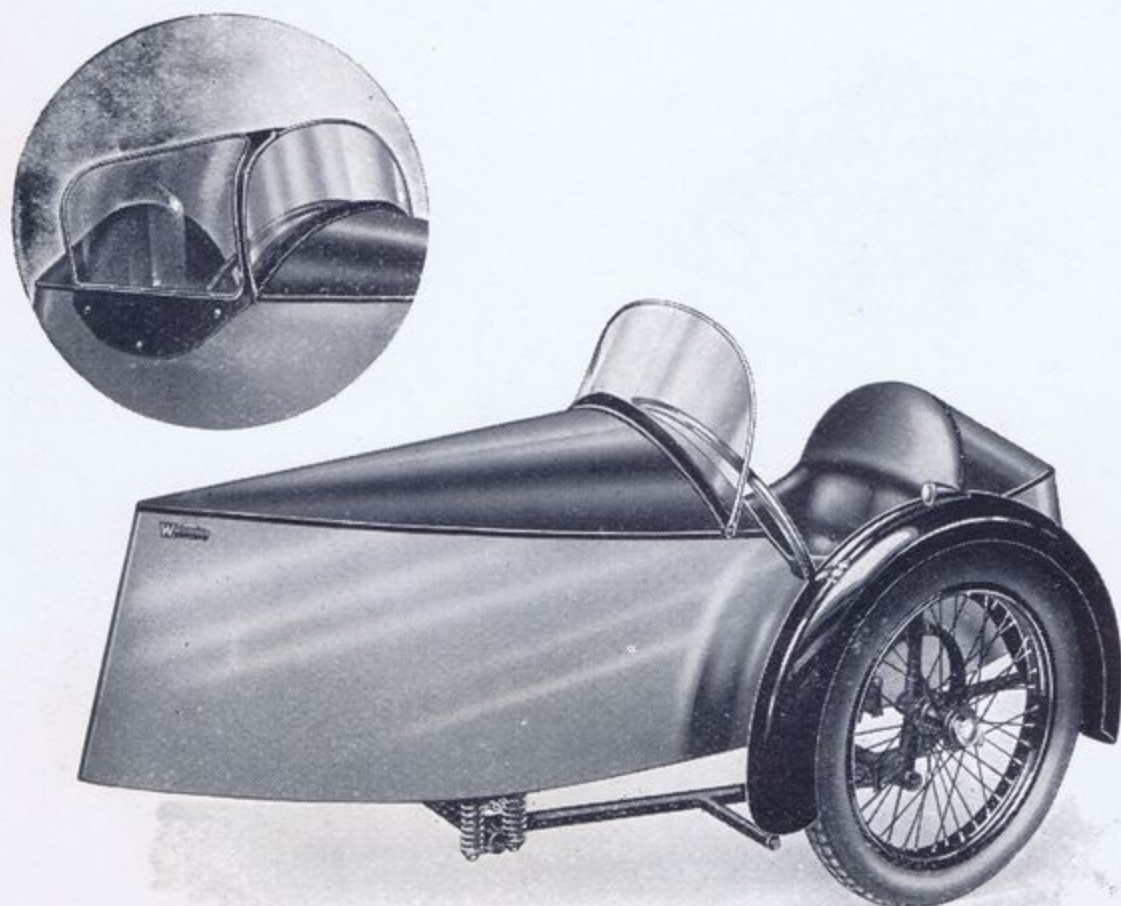
(See pages 18 and 21 for Chassis Specification).

Crate Free : Carriage Paid
any Station Great Britain

Watsonian
SIDE CAR

Barnstormers.co.nz

SCHNEIDER SPORTS



BUILT on the lines of the famous Schneider planes, this model exactly meets sporting requirements. Body has cut-away sides and is fitted with Chromium plated holding rail.

Sports windscreen with chromium plated frame is provided adding considerably to the appearance of the Sidecar, whilst a convenient detachable side screen can be supplied for either driver's or near side at £1 5 0 each extra. Apron is supplied as standard equipment. Body is coachpainted in any dual colour scheme desired with upholstery to harmonise.

Length overall, 82 in. ; Length inside, 58 in. ; Depth of back, 20 in. ; Seat, 16 x 19 in.

Code.				
Schnx.	Schneider on " X20 " Chassis	...	£13	15 0
Schnev.	Schneider on " V21 " Chassis as illustrated	£14	17 0
Schea.	Schneider on Ariel Triangulated Chassis		£15	18 6
Schnej.	Schneider on " J21 " " Kwikfit " Chassis		£17	14 0
Schne.	Schneider Body only	£ 7	7 6

(See pages 18 to 21 for Chassis Specification).

Crate Free : Carriage Paid
any Station Great Britain

Barnstormers.co.nz

Watsonian
SIDECARS

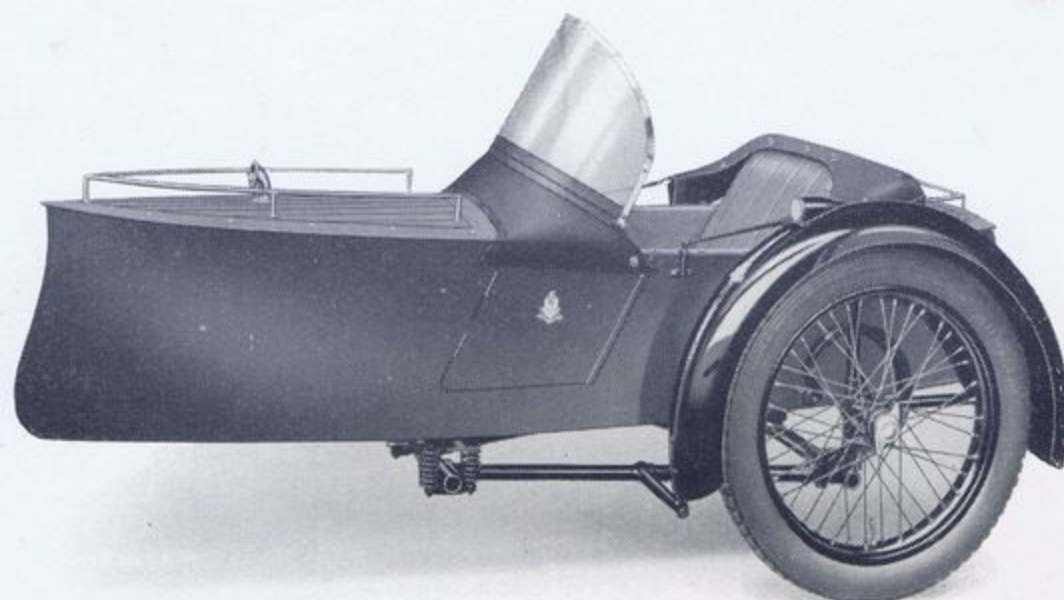
SPORTS LAUNCH

A Sports Launch Sidecar with complete equipment which includes a neatly folding hood and hood apron. A novel hinged sports wind-screen which folds forward, makes entry and exit to the sidecar extremely simple.

Front and rear chromium deck rails and cowl are fitted as standard, whilst the pressed steel decks can be finished in grained mahogany or any colour to order, the body is coachpainted and your own ideas of dual colour schemes can be incorporated to blend with the upholstery which is of best quality leather cloth with a sprung seat and back.

Ample luggage space in locker behind back rest.

Length overall, 81 ins. Length inside, 55 ins. Depth of back, 20 ins. Seat $15\frac{1}{2} \times 20\frac{1}{2}$ ins.



Code.				
Sponx.	Sports Launch on " X20 " Chassis	...	£15	13 0
Sponv.	Sports Launch on " V21 " Chassis	...	£16	15 0
Spona.	Sports Launch on Ariel Chassis	...	£17	16 6
Sponj.	Sports Launch on " J21 " " Kwikfit " Chassis	...	£19	2 0
Spla.	Sports Launch Body only	...	£9	5 6

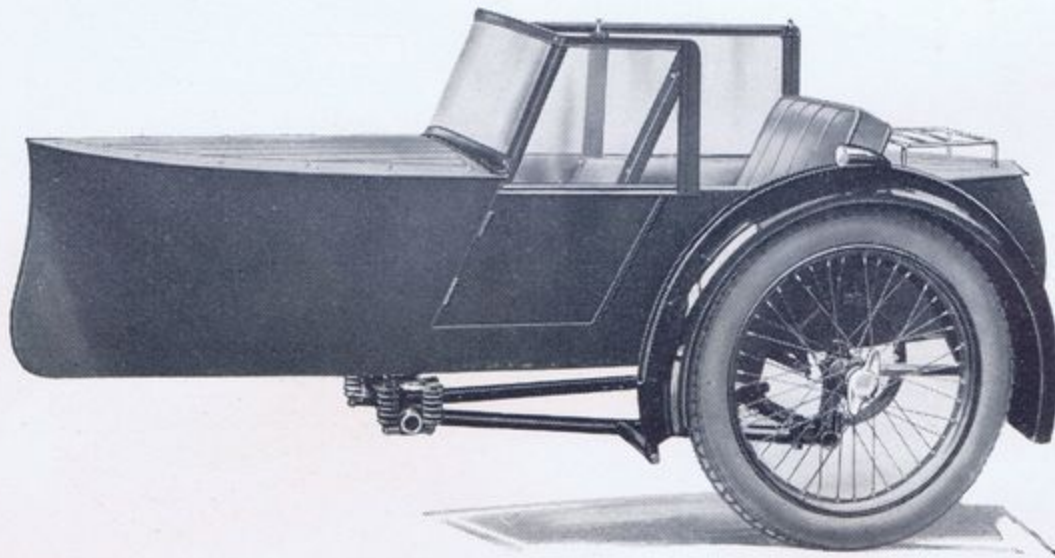
(See pages 18 to 21 for Chassis Specification).

Crate Free : Carriage Paid
any Station Great Britain

Watsonian
SIDECAR

Barnstormers.co.nz

LAUNCH TOURER



Code.

Laonx.	Launch on " X20 " Chassis	£14	7	0
Laonv.	Launch on " V21 " Chassis, as illustrated			£15	9	0
Laona.	Launch on Ariel Chassis	£16	10	6
Laonj.	Launch on " J21 " " Kwikfit " Chassis...			£17	16	0
Laun.	Launch Body only	£7	19	6

(See pages 18 to 21 for Chassis Specification).

Crate Free : Carriage Paid
any Station Great Britain.

THE Launch Sidecar has become deservedly popular and this low priced Model, built to really sporting lines, has a wide appeal. Being very roomy, excellent passenger comfort is ensured, whilst, a wide door enables easy entry. Grained decking, with chromium plated rear luggage rail. Body is coachpainted, whilst your own ideas of dual colour schemes can be incorporated if you wish. Upholstered in good quality leather cloth, with sprung seat and back. Large celluloid windscreen, with side panels and coverall apron.

Ample luggage space in locker behind back rest.

Quick-detachable hood is supplied as an extra at 17/6.

Length overall, 81 in. ; length inside, 55 in. ; Depth of back, 20 in. ; Seat, 15½ x 20½ in.

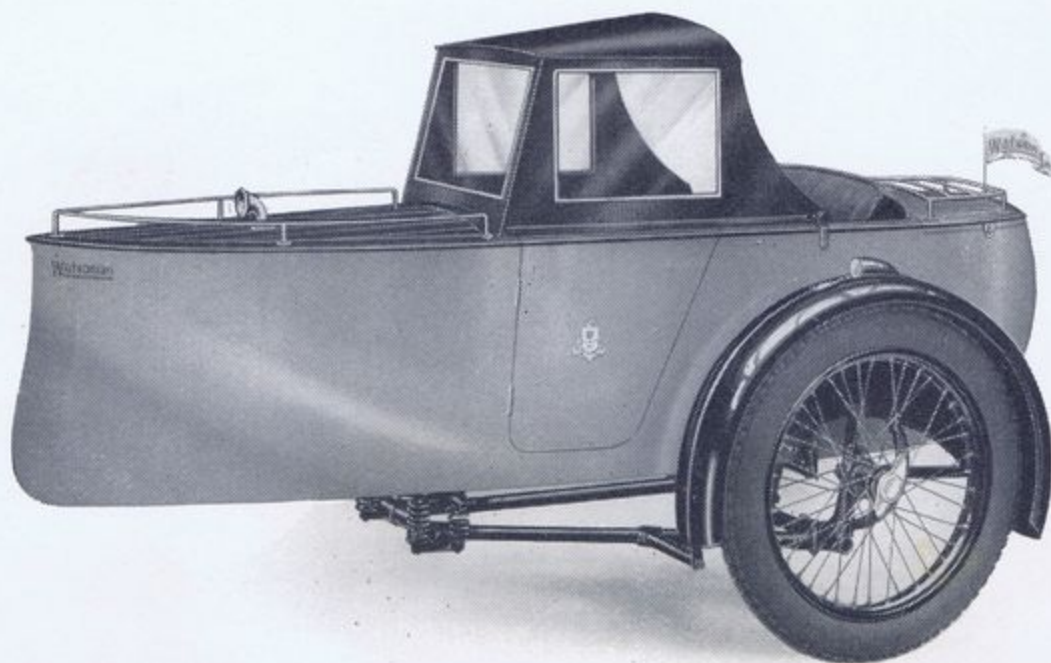
CABIN CRUISER

BEAUTIFUL Cruiser lines have been adapted to form one of the most popular present day designs and this Model is supplied fabric covered or polished aluminium finish.

Cabin and Decking are all pressed steel, and are painted grained mahogany or special colours to order. Upholstered in best quality leather cloth, with sprung seat and back, and two pockets. Fore and aft deck rails, flag pennant and ventilating Cowl are chromium plated, whilst the hood which folds back is neatly stored in a recess in the cabin top and can be erected in a few seconds.

A footrest, adjustable to three positions, suitable for passengers from 4 to 6 feet is telescopic and can be adjusted by hand.

Length overall, 83 in. ; length inside, 55 in. ; Seat, $15\frac{1}{2} \times 20\frac{1}{2}$ in. Depth of back, 22 in.



Code.

Cruonv.	Fabric Cabin Cruiser on " V2I " Chassis as illustrated	£18	7	0
Cruona.	Fabric Cabin Cruiser on Ariel Triangulated Chassis	£19	8	6
Cruonj.	Fabric Cabin Cruiser on " J2I " " Kwikfit " Chassis	£20	14	0
Cabcru.	Fabric Cabin Cruiser Body only... ..	£10	17	6
	Extra for Aluminium Panels, 10/-			

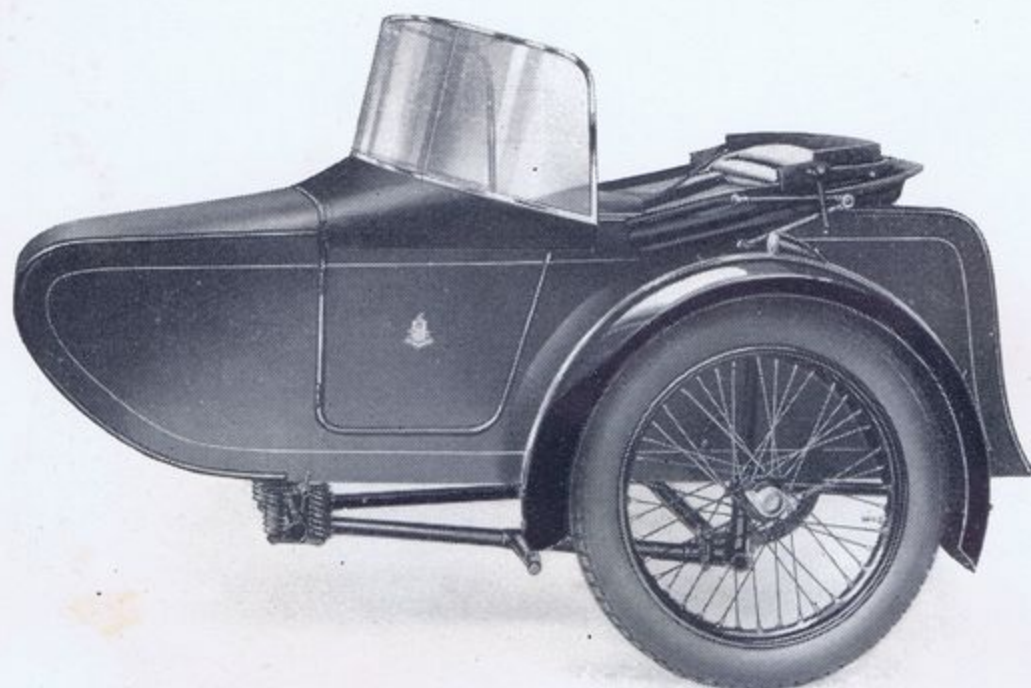
(See pages 18 to 21 for Chassis Specification).

Crate Free : Carriage Paid
any Station Great Britain

Watsonian
SIDE CARS

Barnstormers.co.nz

MONARCH MODEL



Code.			
Monv.	" Monarch " on " V21 " Chassis, as illustrated, fully equipped with hood and screen	£17	2 0
Mona.	" Monarch " on Ariel Triangulated Chassis	£18	3 6
Monj.	" Monarch " on " J21 " " Kwikfit " Chassis	£19	9 0
Mon.	" Monarch " Body only	£9	12 6

(See pages 18 to 21 for Chassis Specification).

Crate Free : Carriage Paid
any Station Great Britain

THE famous " Monarch " Sidecar has been re-constructed in accordance with the most up-to-date practice and presents an ideal attachment for medium powered Motor Cycles.

The windscreen which has been entirely re-designed folds forward, the frame being hinged at the front. The Hood which is sprung operated allows half open or fully closed position and is easily opened by driver or passenger.

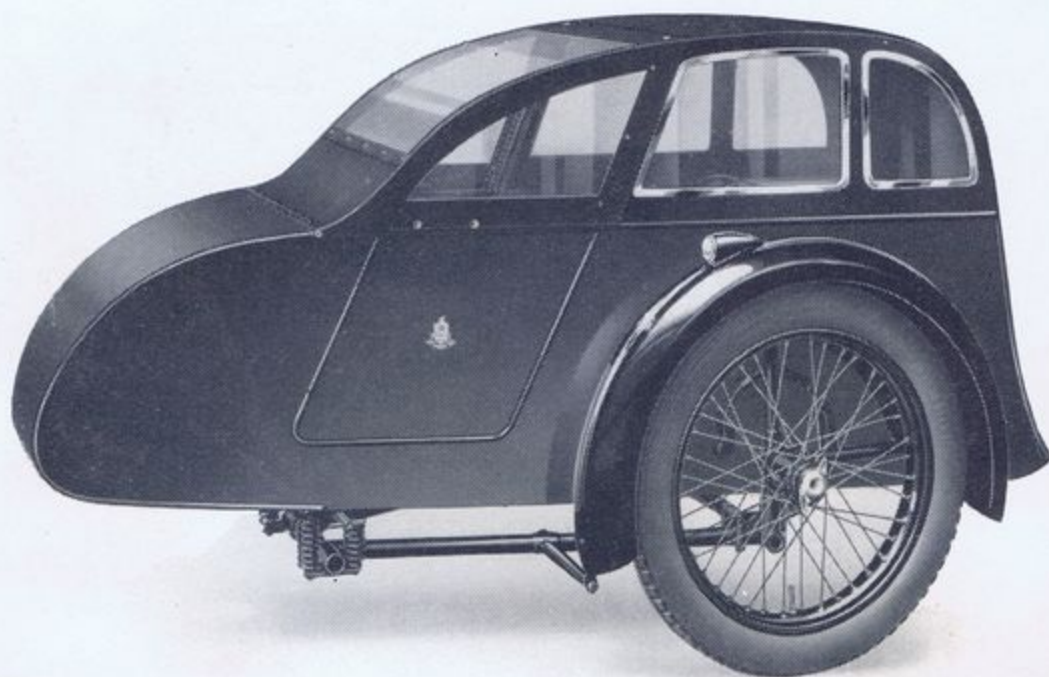
Selected three-ply and coach-painted sheet steel panels are used with best quality leather cloth upholstery, having lace spring seat and back, arm rests and two pockets. Large and accessible rear locker can be opened without disturbing passenger. Colour stocked to match all leading makes of Motor Cycles. No extra charge for special finishes.

Length inside, 48 in., 76 in. overall ; Seat, 15½ × 20½ in. ; Depth of back, 22 in.

AIR-FLOW MODEL

ALTHOUGH unorthodox in appearance, this model closely follows the latest car practice of fully streamlining a low built saloon body. An extra large rear locker, opening from the back, gives ample luggage accommodation without in any way cramping the inside seating space ; a six foot passenger has ample head room and an unimpeded vision through the front screen which is heavy gauge celluloid, mounted in a steel frame, hinged at the front to fold forward.

Pressed steel panels give added strength to this model which can be coachpainted in any colour scheme you desire, and upholstered in best quality leather cloth to match. A spring back and seat is provided, size $20 \times 15\frac{1}{2}$ ins. Depth of back, 19 ins. Length inside, 58 ins. Length overall, 76 ins. Size of locker, 24 ins. \times 18 ins. deep \times 19 ins. wide.



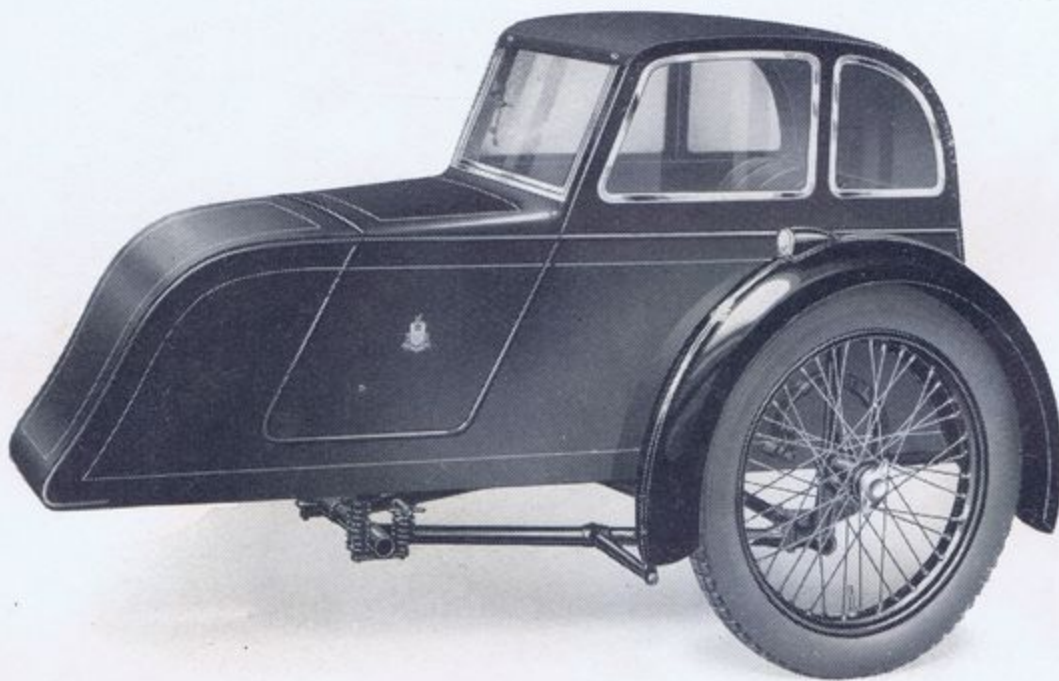
Code.

Aronv.	Airflow on " V2I " Chassis, fully equipped as illustrated	£19	17	6
Aronj.	Airflow on " J2I " Chassis	£22	4	6
Arfo.	Airflow Body only	£12	8	0

(See pages 18 to 21 for Chassis Specification).

Crate Free : Carriage Paid
any Station Great Britain.

STRATFORD SALOON



THIS model again breaks away from orthodox practice. At a glance the attractive sporting lines of the "Stratford" are obvious.

This low built sports saloon has a convenient front dash with chromium plated safety glass windscreen which, for easy access, is hinged to open forward. A pressed steel fixed head is fitted with celluloid side windows and an easily operated waterproof cover, whilst a roomy locker is located at the rear, accessible without disturbing the passenger. Body is coach-painted and can be supplied in colour desired with spring back and seat, upholstery to harmonise. Colour samples submitted on request.

Length inside, 48 in., 71 in. overall; Seat, $15\frac{1}{2} \times 20\frac{1}{2}$ in.; Depth of back, 22 in.

Code.			
Stronv.	"Stratford" on "V21" Chassis Fully equipped as illustrated...	£19	12 6
Stronj.	"Stratford" on "J21" Kwikfit Chassis	£21	19 6
Stro.	"Stratford" Body only ...	£12	3 0

(See pages 18 and 21 for Chassis Specification).

Crate Free : Carriage Paid
any Station Great Britain

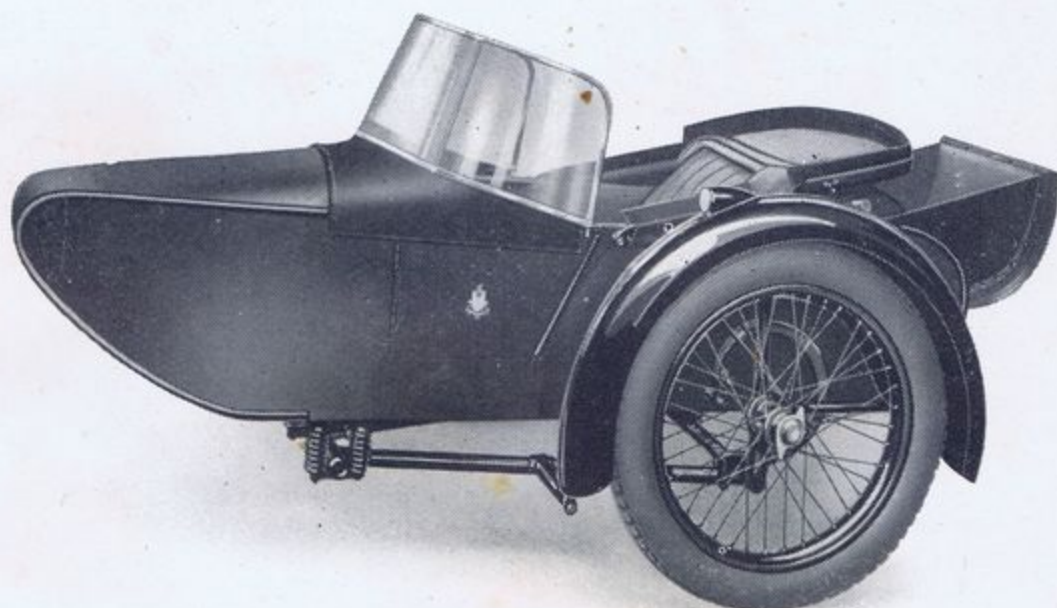
SHIRLEY MODEL

AN ideal Sidecar for those requiring a well-finished but inexpensive light sidecar. The specification includes a large and comfortable front seat with fully sprung upholstery, and a small dickey seat in rear locker, which is suitable for carrying a child up to 7 or 8 years of age.

The Body can be coachpainted in any selected colours with upholstery to harmonise. Colour samples will be forwarded on application.

The Windscreen, which is mounted in a strong frame, folds forward, making entry and exit from the sidecar really simple. The Hood has a spring action and can be half raised or fully closed by the passenger at will.

Length overall, 71 ins. Length inside, 50 ins. Seat, 15½ ins. x 20 ins. Depth of back, 19 ins.



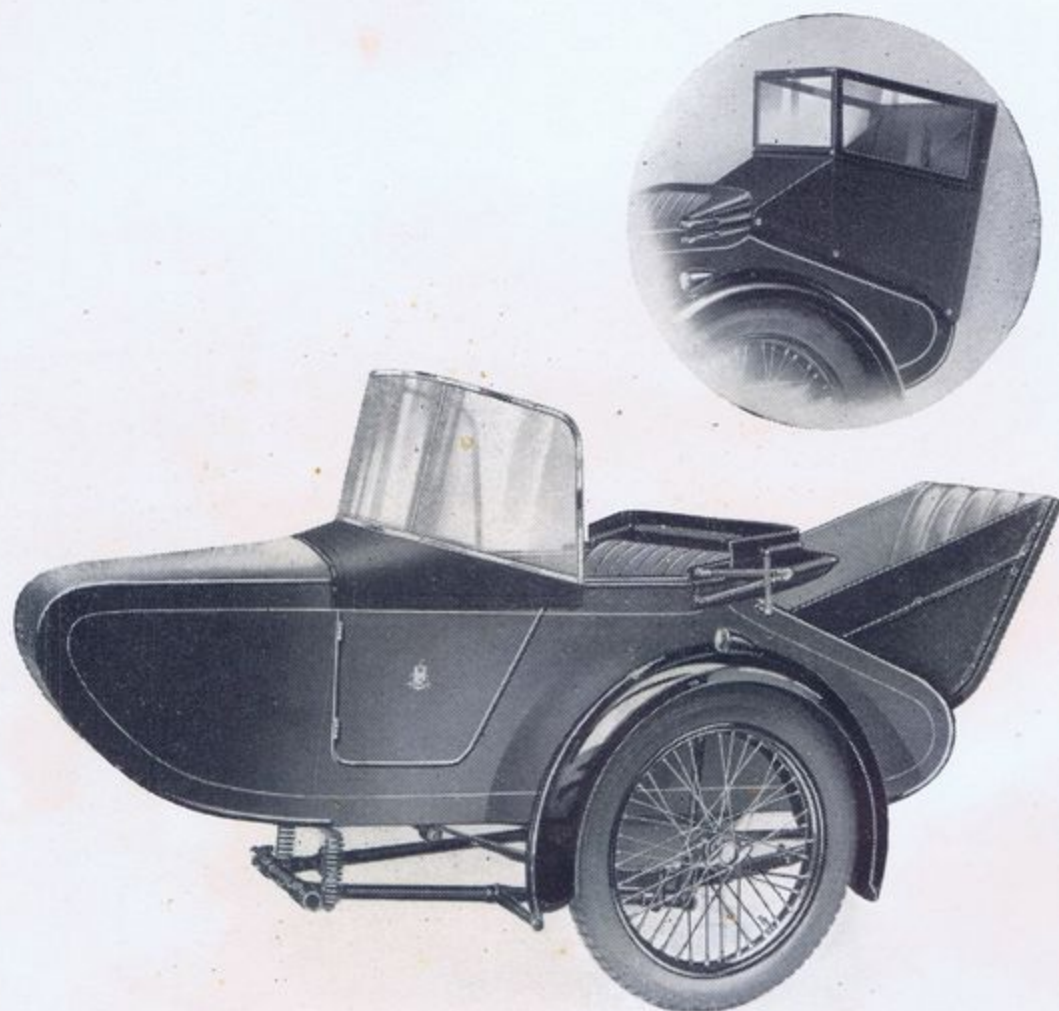
Code.

Shonx.	"Shirley" on "X20" Chassis	£14	18	0
Shonv.	"Shirley" on "V21" Chassis as illustrated	£16	0	0
Shona.	"Shirley" on Ariel Chassis	£17	1	6
Shonj.	"Shirley" on "Kwikfit" Chassis "J21"	£18	7	0
Shire.	"Shirley" Body only	£8	10	6

(See Pages 18 and 21 for Chassis Specification).

Crate Free : Carriage Paid
any Station Great Britain

HENLEY OCCASIONAL



FOR the occasional accommodation of Two Adult Passengers or for use as a Single Seater Sidecar this Model warrants your special attention.

The sturdy construction includes 3 ply and coach-painted sheet steel panels, large door, ample weather protection by means of a fold forward celluloid screen and the Hood which incorporates a spring to allow half open position for semi-sunshine use. This can be instantly operated by either driver or passenger. Best quality leather cloth, with lace spring seat and back, arm rests and pockets, colours stocked to match all leading makes of Motor Cycles, with no extra charge for special finishes.

A Windscreen and Hood to totally enclose the rear passenger, can be supplied at an extra charge of £1 7 9.

Length overall, 82 in.; Length inside front, 48 in. ; Inside rear, 45 in. ; front seat, 16½ x 19 in. ; rear seat, 12 x 16 in. ; Depth of back, 24 in.

Code.				
Henonv.	" Henley " on " V23 " Chassis, as illustrated, equipped with Hood and Windscreen	£19	10	0
Henonj.	" Henley " on " J23 " " Kwikfit " Chassis	£21	11	6
Heno.	" Henley " Body only	£10	18	0

(See pages 19 and 21 for Chassis Specification).

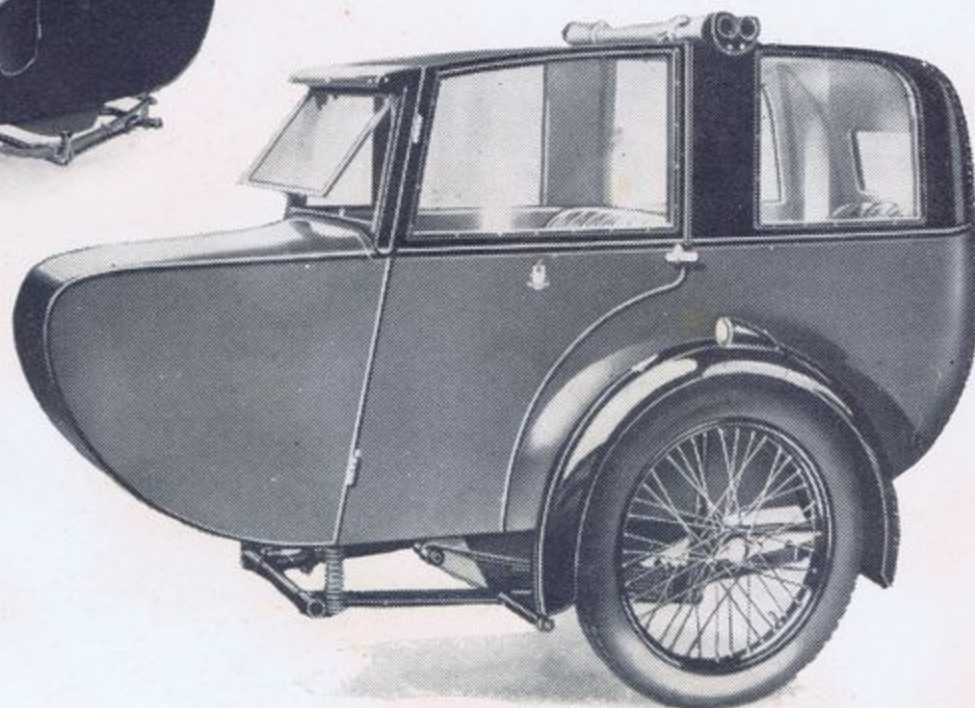
Crate Free : Carriage Paid
any Station Great Britain

WARWICK SALOON

FULL TWO-SEATER

THE problem of providing a neat attractive Sidecar suitable for the comfortable transport of two adults has been solved with complete success by the introduction of this coach-built Model. Hardwood framing is used with sheet steel panels providing great strength, whilst the Body can be mounted on chassis specified on pages 19/21. Two doors are provided, a separate large door ensuring easy access to rear seat. Chromium plated adjustable safety glass windscreen with side windows of celluloid opening on driver's side. Upholstered in best quality leather cloth with lace spring seat and back for both passengers. Weather protection or open air conditions are obtainable by means of the two detachable tops, providing protection independently for either seat.

Length overall, 83 in., Length inside front, 44 in., inside rear, 42 in. ; front seat $17\frac{1}{2} \times 18$ in. ; rear seat, $15 \times 19\frac{1}{2}$ in. ; Depth of back, 22 in.



Any Two-colour scheme desired (colour samples sent).

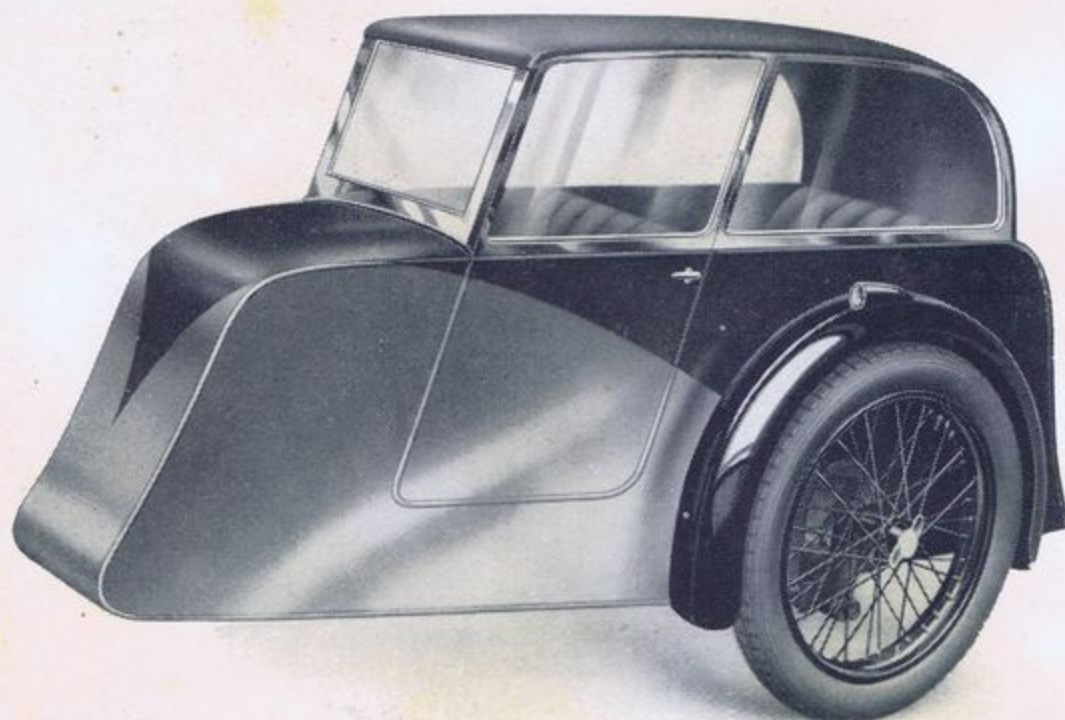
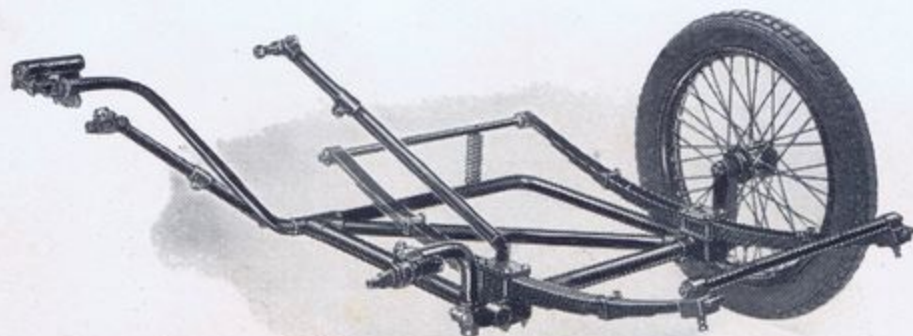
Code.				
Waronv.	" Warwick " on " V23 " Chassis, as illustrated, equipped with windscreen and top covers...	£28	0	0
Waronj.	" Warwick " on " J23 " " Kwikfit " Chassis ...	£30	1	6
Waro.	" Warwick " Body only ...	£19	8	0

(See pages 19 and 21 for Chassis Specification).

Crate Free : Carriage Paid
any Station Great Britain

DE LUXE COUPÉ

OCCASIONAL TWO-SEATER



AN entirely new principle in Sidecar design is incorporated in this Body, built with the primary object of providing a large single seater luxury attachment, a hammock type auxiliary seat is provided for a second passenger, but this is only suitable for a person up to 4' 6" in height, panelled with sheet steel and finished in any dual colour to suit customers selection. The spring seat and back are upholstered in best quality leather cloth to harmonise, and a large rear locker can be opened without disturbing the passengers. A safety glass adjustable windscreen and heavy gauge celluloid side windows all in chromium plated frames, with quickly fitted hood completes the Ideal Sidecar. Length overall, 78in.; Length inside, 56 in. ; Seat, 19 x 19 in. ; Depth of back, 22 in. ; Width of back, 20 in. . .

Sprung Wheel Y Chassis.

Patent No. 398594

THE Y Chassis, only supplied in conjunction with the above Body, departs entirely from orthodox principles. Extensively tested it has proved itself a rigid and reliable attachment, incorporating refinements of wheel fitted with journal bearings, fixed to the Chassis by a patented system its lower end being mounted on a Silent Bloc. This gives a limited movement and absorbs all road shocks. Springing is by long semi-elliptical seven leaf springs, the bearer bars being accommodated in rubber bushes with sliding shackles running on Ferodo.

Code.
Couy.

De-Luxe Coupe	£25	0	0
On Spring wheel "Y" Chassis			

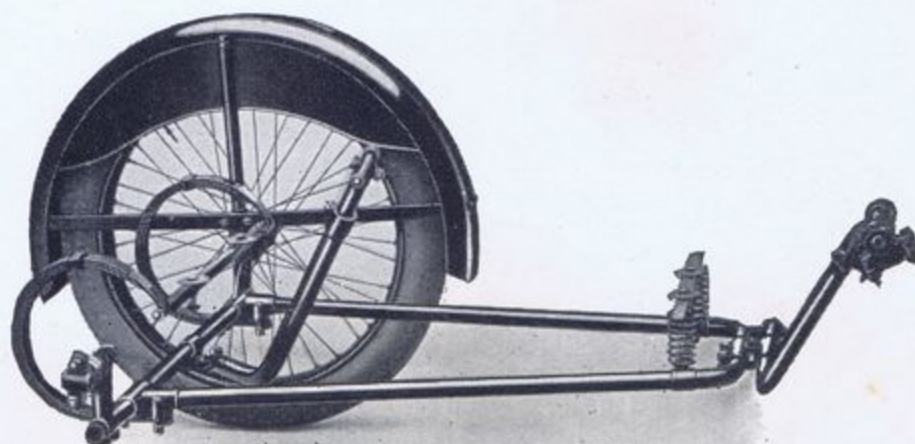
Crate Free : Carriage Paid any Station Great Britain.

Barnstormers.co.nz

Watsonian
SIDECARS

MODEL "X20" CHASSIS

WILL accommodate Bodies 'Greet,' 'Speed,' 'Shirley,' 'Schneider,' 'Launch' and 'Albion.' This Chassis is not recommended for attachment to Motor Cycles over 350 c.c. Built of weldless steel tube giving a generous reserve of strength. A 1 in. detachable steel wheel spindle is fitted, whilst the wheel on special hub is supplied with chromium hub cap and 10 gauge spokes. Springing is by 3 leaf "Cee" springs at rear with coil springs at front. A 5 in. "D" section ribbed mudguard with valance and electric lamp is fitted. Three points of attachment are provided—strong, quickly detachable, turned from steel. Weight 55 lbs. Distance between springs 20 in.



Code.

Chax.

Chaxo.

With any size wheel and Dunlop Tyre

With any size wheel, less tyre ...

£6 16 6

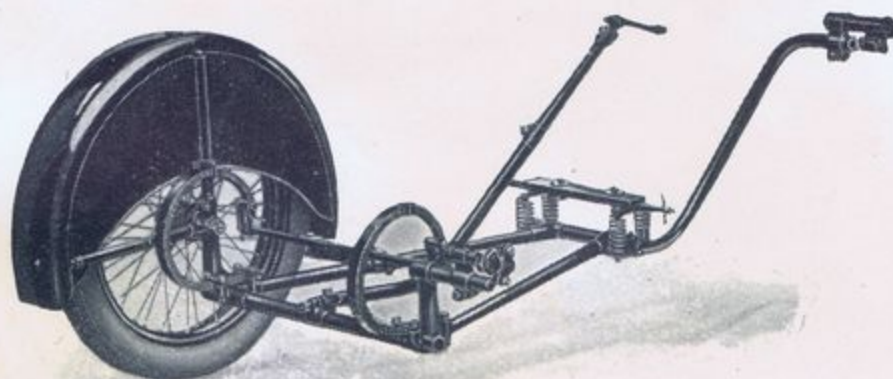
£6 1 6

Chassis Number designation is always width between Springs.

MODEL "V21" CHASSIS

THIS chassis will accommodate all our Bodies with the exception of 'Warwick,' 'Henley,' and large Commercials, and is suitable for attachment to any rigid frame Motor Cycle. Built of high quality large diameter weldless steel tube with substantial lugs. A 6 in. "D" section ribbed mudguard with electric lamp is fitted and attached to the Chassis at three points. Journal bearing hub, special steel wheel spindle and 10 gauge spokes are provided. Springing is by 4-leaf "Cee" springs at rear with four coil springs at front, well enamelled throughout, three points attachment and 5 1/2 in. axle drop. Weight 74 lbs. Distance between rear springs 21 in. Spring Bars are quickly detachable for Body Changing.

Can be built for right-hand attachment without extra charge. Code CHAVR.



Code.

Chav.

Chavo.

Chavb.

Cavnc.

With any size wheel and Dunlop Tyre

With any size wheel, less Tyre ...

Extra for 7 in. brake and operating pedal on side rail ...

With cradle wheel as illustrated on VC33 Chassis extra ...

£7 18 6

£7 2 6

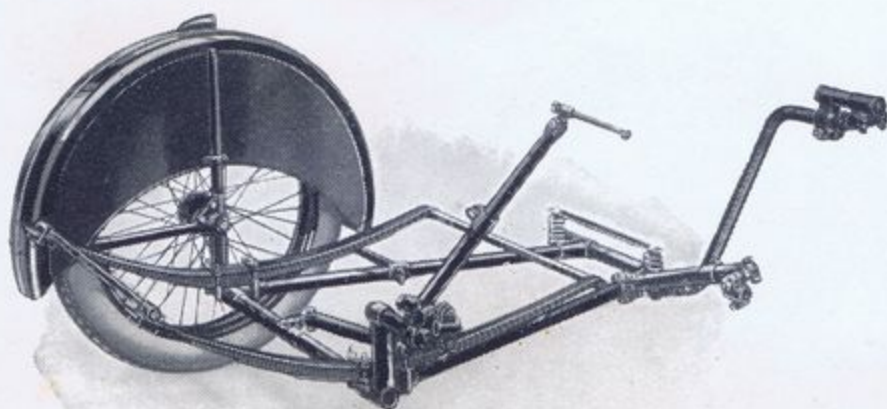
Crate Free :
Carriage Paid any
Station Great Britain.

Rudge interchangeable wheel and spindle can be supplied for X20, V21, V23 and Competition Chassis at £1 15 0 extra.

Watsonian
SIDECHASSIS

Barnstormers.co.nz

MODEL "V23" CHASSIS



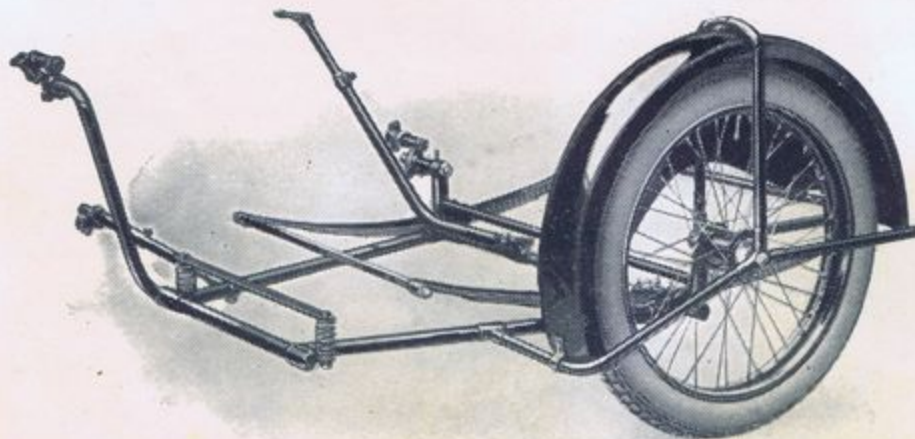
Code.		
Chavt.	With any size wheel and Dunlop Tyre	£9 1 0
Chavto.	With any size wheel, less Tyre ...	£8 5 0
Chavrc.	With cradle wheel as illustrated on VC33 Chassis extra 15/-	

Cee Springs with quick detachable shackles as alternate specification without extra charge.

THIS Chassis will accommodate all our bodies with the exception of the Wide Van. It is suitable for attachment to any rigid frame Motor Cycle, is built of high quality weldless steel tube of large diameter and substantial lugs. A 6 in. "D" section ribbed mudguard with electric lamp fitted, is attached to the chassis at three points. The wheel has 10 gauge spokes with special steel spindle and journal bearings. Seven leaf long elliptical springs are provided with rubber bushes and sliding shackles mounted on Ferodo, with coil springs snubbers at the front. Distance between springs 23 in. Spring bars are quickly detachable for Body changing only when "Cee" springs are fitted. Four point attachment, 5½ in. axle drop. Weight 86 lbs.

Can be built for right-hand attachment without extra charge. Code : CHAVRT.

MODEL "VC33" CHASSIS



Code.		
Chavc.	With any size wheel and Dunlop Tyre	£9 19 6
Chavco.	With any size wheel, less Tyre ...	£9 2 0

Chassis Number designation is always width between Springs.

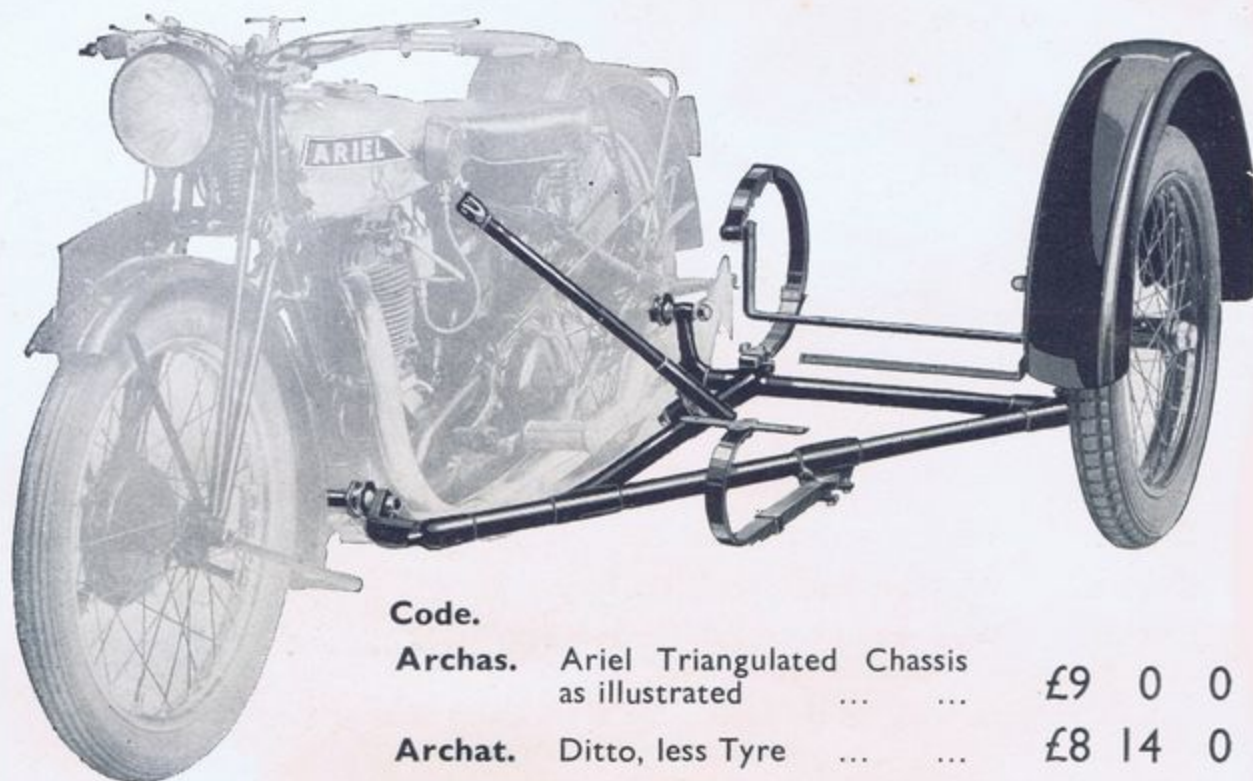
Crate Free : Carriage Paid any Station Great Britain.

V21 and V23 and Competition Chassis can be supplied with cradle and Sunbeam interchangeable wheel at £2 15 0 extra.

THIS Chassis is of similar design to the V23 in. with the addition of a totally enclosed cradle wheel. It is built as standard 33 in. between the rear springs to accommodate our largest bodies, but can be constructed any width up to 33 in. without extra charge. Four points of attachment are provided, 10 gauge spokes and a substantial hub with a ½ in. diameter screw out spindle are embodied in the wheel. The chassis is specially strengthened for strenuous commercial service and an electric lamp fitted as standard.

"ARIEL" TRIANGULATED CHASSIS

SPECIALLY designed for use with Ariel Motor Cycle Models from 1930 onwards. This special chassis can accommodate either the following bodies :—Speed Model, Cabin Cruiser, Launch Sports and Tourer Models, Schneider Sports, Shirley, Greet or Small Commercial Box. The Chassis attaches to Motor Cycle frame by means of large ball joints front and rear, third joint is spring loaded and attaches to the seat pillar eliminating the transmission of road shocks. Journal Bearing wheel, 10 gauge spokes and Dunlop tyre. Front and rear leaf springs. State Model and year when ordering.



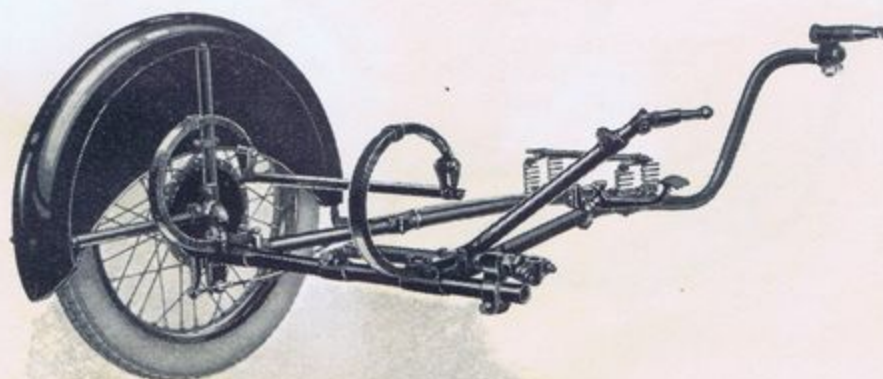
Code.

Archas.	Ariel Triangulated Chassis as illustrated	£9 0 0
Archat.	Ditto, less Tyre	£8 14 0

Crate Free : Carriage Paid any Station Great Britain.

COMPETITION CHASSIS

DESIGNED for the competition rider for use on any machine, this chassis is an adaption of the well-proved "V" Model. Heavy gauge weldless steel tubing, allowing generous safety factor, is used. Ground clearance 11 in. narrow track, 7 in. internal brake hub wheel, cable and pedal operated, adjustable to any position on chassis side member. Any size rim with 8 gauge spokes and Dunlop tyre. The Chassis is 18 in. between rear springs and will accommodate the "Speed" and "Greet" Model bodies. If desired can be built 21 in. between "Cee" springs without extra charge to receive all bodies suitable for "V21" Chassis.



Code.

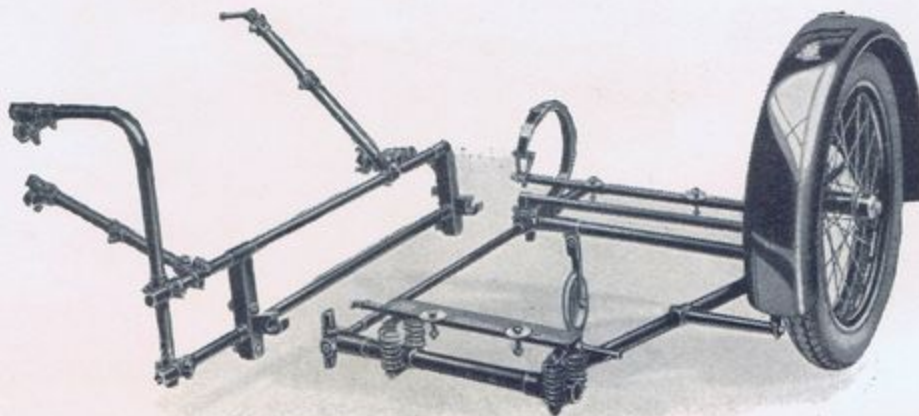
Chacom.	Competition Chassis complete	£9 7 6
Chaca.	Ditto, less tyre	£8 11 6

Crate Free : Carriage Paid any Station Great Britain.

"KWIKFIT" DETACHABLE CHASSIS

MODELS "J21" and "J23"

THE "J21" Chassis being 21 in. between rear springs permits it to accommodate all bodies specified to be mounted on "V21" Chassis and when detached will wheel through a 32 in. passage. If the standard width chassis is too wide for your requirements it can be built narrower, the distance between rear springs plus 11 in. determining the space through which the Sidecar will wheel.



THE "J23" will accommodate all bodies, with the exception of the Wide Van and Truck, and can be fitted with long elliptical springs for Commercial purposes without extra charge. Both have four points of attachment and Journal Bearing Wheel, with 10 gauge spokes and special steel spindle. Both are suitable for any rigid frame Motor Cycle. When detached the "J23" will wheel through a 34 in. passage. Both are fitted with ribbed mudguard and Electric Lamp as standard.

Code.

Chat.	"J21" with any size Dunlop Tyre	...	£10	5	6
Chajo.	"J21" less Tyre	£9	9	6
Chajt.	"J23" with any size Dunlop Tyre	...	£11	2	6
Chajto.	"J23" less Tyre	£10	6	6

Crate Free: Carriage Paid any Station Great Britain.

Genuine Rudge or Sunbeam Interchangeable Wheel £1 15 0
and £2 15 0 extra respectively.

NO longer need anyone be held back from enjoying the amenities of travel by Sidecar outfit by considerations of storage difficulty and cost. The "KWIKFIT" Detachable Chassis (Pat. No. 265825) solves all storage problems. If you can keep a solo at home you can keep a Combination likewise. The main frame complete with Body attaches or detaches in 20 Seconds—No Tools Needed, and will wheel up a 32 inch passage.

Think what it means. No garage bills to pay. The whole process is simplicity itself and the "KWIKFIT" is stronger than a standard Chassis—this is endorsed by hundreds of delighted users.

A "KWIKFIT" Detachable Chassis costs slightly more but the little extra is swallowed up in no time by the garage costs saved. It can be fitted to any Motor Cycle with rigid frame.

MOTOR CYCLE CARRIER

THIS Carrier, while adaptable to a wide variety of uses, is a particularly valuable possession for a Cycle or Motor Cycle Agent. Provided with 34 in. ramps, elevated sign board, it can be altered to meet individual requirements.

Inside measurements : Length 69 ins. ; width $28\frac{1}{2}$ in. ; Sides, $18\frac{1}{4}$ in. deep. Body colour optional.



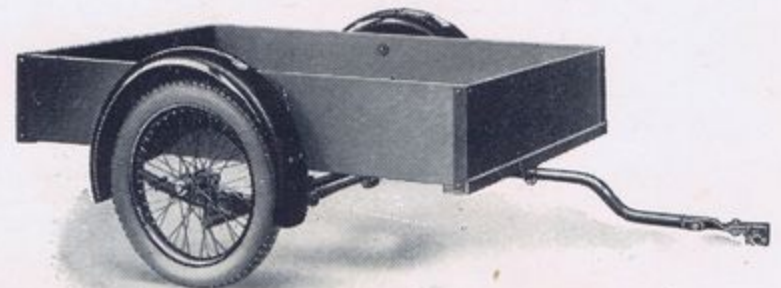
Code.			
Cycarr.	Cycle Carrier on "VC33"		
	Cradle wheel Chassis	... £19 18	6
Cycara.	Cycle Carrier (at Works)	£18 18	6

TRAILER

THIS Trailer with open box is suitable for loads up to 5 cwt. and is a means of increasing the carrying capacity of delivery outfits. Finished lead colour.

Inside Sizes : $70\frac{1}{2}$ in. \times $40\frac{1}{2}$ in. \times 11 in. deep. No brakes are necessary with Standard Body.

Send for Special Trailer List.



Code.			
Tracom.	Trailer complete as illustrated	£12 17 6

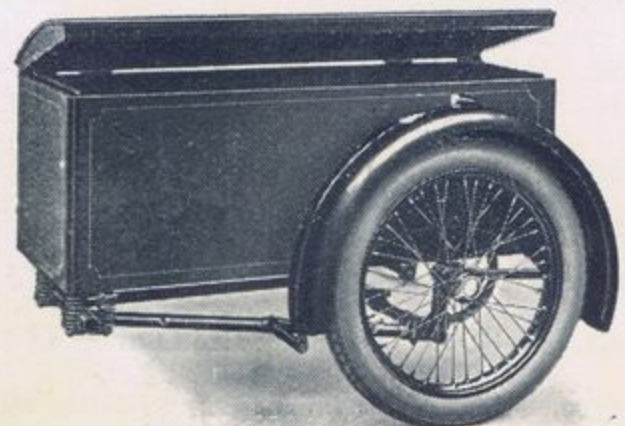
Prices given for special bodies, finished and lettered.

COMMERCIAL BOX

A PROFITABLE means of light delivery. The Box is built of three-ply and sheet steel panels on hardwood framing, for loads up to 3 cwt. Top opening, fitted with lock, key and chains. Finished any colour.

Dimensions Inside ; Depth 16 in. ; width $19\frac{1}{2}$ in. ; length 45 in.

A smaller body, 16 in. deep, $16\frac{1}{2}$ in. wide and 45 in. long is supplied on Model "X20" or "V21" Chassis.



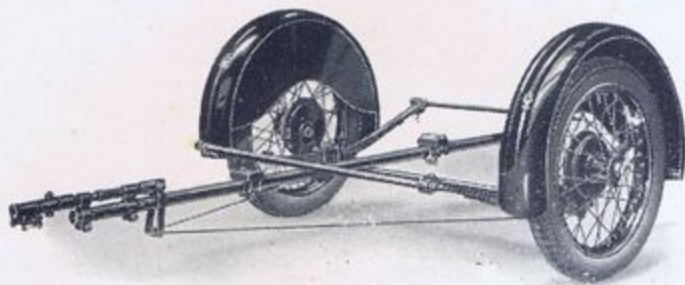
Code.			
Boxonx.	Box on X20 Chassis	... £11 5	0
Boxonv.	On V21 Chassis, as illustrated	£12 7	0
Comonv.	Box on V23 Chassis	... £13 9	6
Comona.	Box on Ariel Chassis	... £13 8	6
Boxonj.	On J21 "Kwikfit" Chassis	£14 14	0
Comonj.	On J23 "Kwikfit" Chassis	£15 11	0
Combox.	Box Body only	... £4 17	0

Black enamel Basket rail round lid, 12/6 extra.

Watsonian
SIDECARS

Barnstormers

TRAILER CHASSIS

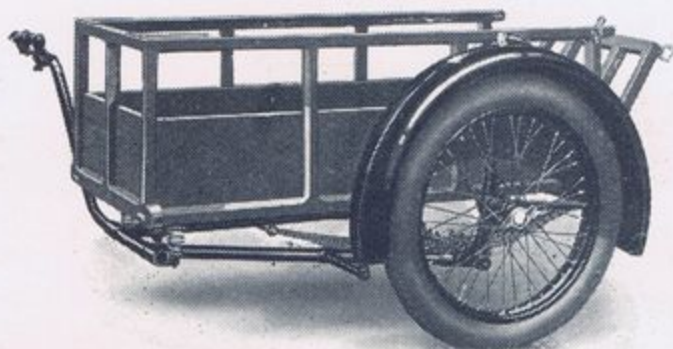


Code.

Trabra.	Chassis complete, as illustrated with brake hub wheels and mudguards for fixing to Body	£13	17	6
Tracha.	Chassis, as standard...	£10	17	6

COMBINING utmost strength with minimum weight, large diameter steel tube with $5\frac{1}{2}$ in. axle drop lugs and incorporated spring platforms. Wheels have special steel spindles, 10 gauge spokes and journal bearings. Special semi-elliptic springs, incorporating rubber bushes and sliding shackles, are fitted. No brakes are necessary on this Trailer Chassis when a light body is used. Automatic Braking Device worked on over-run principle is fitted with brake hub wheels.

COMMERCIAL TRUCK



Code.

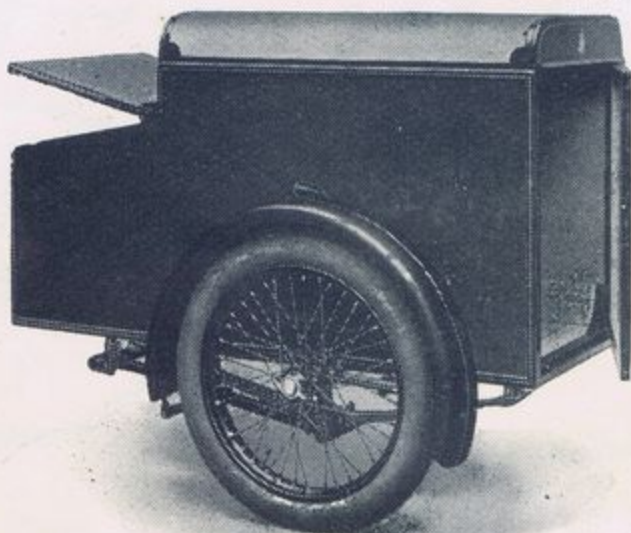
Truonv.	On V23 Chassis, as illustrated	£13	19	6
Truonj.	On J23 "Kwikfit" Chassis	£16	1	0
Ltruonvc.	Large Truck VC33 Chassis	£15	15	6
Struck.	Small Truck Body only ...	£5	7	6
Ltruck.	Large Truck Body only ...	£6	5	0

THESE strong Trucks are invaluable for a wide variety of uses. Bodies have Oak and Ash Frames, reinforced with iron supports and half round steel strips full length of bottom. Body colour optional.

Small Truck on "V23" Chassis is $14\frac{1}{2}$ in. deep, $21\frac{1}{4}$ in. wide and 45 in. long.

Large Truck mounted on "VC33" cradle wheel chassis is $14\frac{1}{2}$ in. deep, 28 in. wide and 55 in. long inside.

COMMERCIAL VAN



Code.

Vanonv.	On V23 Chassis, as illustrated	£15	1	6
Vanonj.	On J23 "Kwikfit" Chassis	£17	3	0
Comvan.	Van Body only ...	£6	10	3
Vanvc.	Large Van VC33 Chassis ...	£17	3	0
Larvan.	Large Van Body only ...	£7	12	6

Black enamel Basket rail round top, 10/6 extra.

FOR carrying goods up to 4 cwt. Body built of hardwood frame, covered with three-ply and sheet steel panels. Locks and key provided. Painted on one coat inside, exterior finish in colour to suit customer.

Small Van, inside measurements : $28\frac{1}{2}$ in. deep at back, $19\frac{1}{2}$ in. wide, 55 in. long.

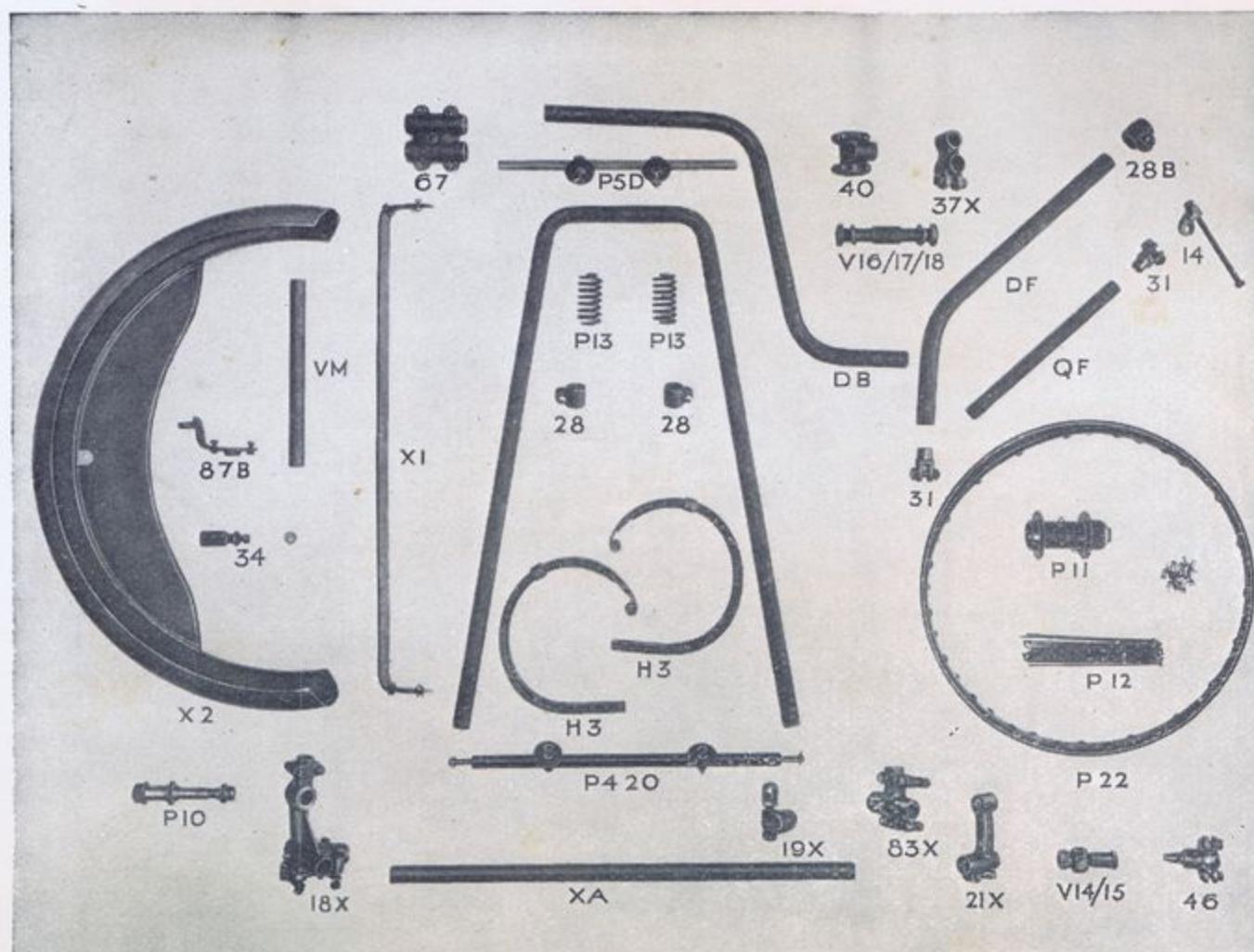
Larger Van mounted on "VC33" chassis is $55 \times 29\frac{1}{2}$ in. wide \times 34 in. high inside.

Watsonian
SIDECARS

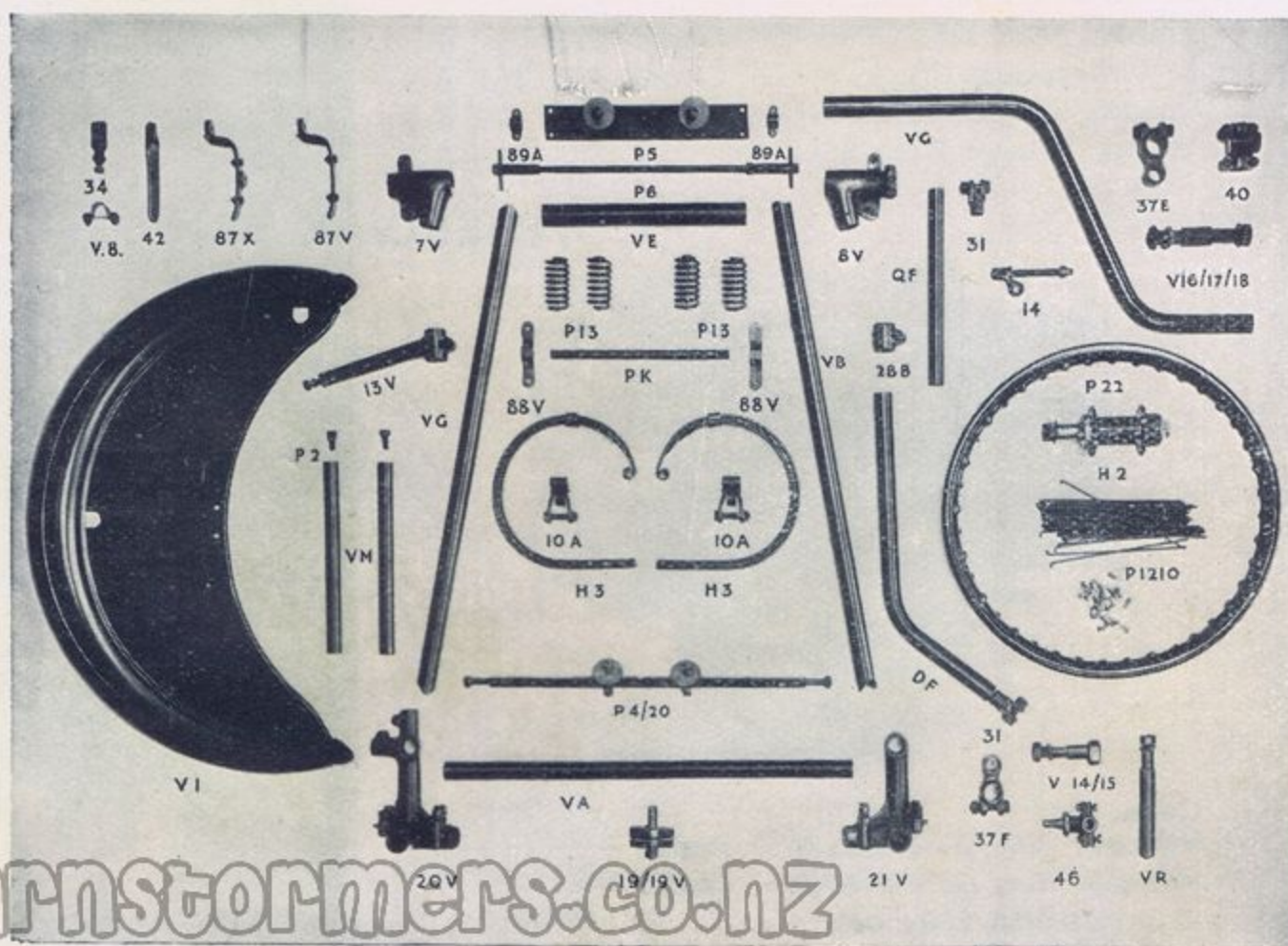
Watsonian Sidcars
Barnetformers.co.nz

SPARE PART REFERENCE NUMBERS

"X20" CHASSIS



"V21" CHASSIS AND "V23" CHASSIS



BALL JOINT CONNECTIONS.

Are supplied as standard on all our chassis, for rear attachment to motor cycle. The ball and socket should be well greased and sufficiently tight to take up all play and locked in position with the thin nut provided.

SLIDING FRICTION SHACKLES.

Supplied on "V23" and "VC33" Chassis in conjunction with rubber bearings in the spring eyes. On no account should grease or oil be allowed to come into contact with the rubber bearings or into the sliding shackles, as this would be detrimental to the "Ferodo" Friction Plates which are adjustable by a set pin underneath the shackle. The Friction Plates should be sufficiently tight to allow the shackle to slide on the spring when the latter is loaded.

QUICKLY DETACHABLE SHACKLES.

As supplied on "V21," "J21" and Competition Chassis greatly facilitates the quick removal of the Sidecar Body, allowing the outfit to be changed from pleasure to commercial, or vice versa, in a few seconds. The shackle which has a 2" drop is suitable only for "Cee" type springs with $\frac{3}{8}$ " eye, $1\frac{1}{8}$ " through and $\frac{7}{16}$ " diameter bearer bar end.

JOURNAL BEARING HUBS.

As standardised on all our chassis for 1935 should be kept well packed with thick hub grease. The Bearings are adjusted, locked and split pinned, before leaving our works, and do not require any further attention except greasing.

SPRINGS—ELLIPTICAL AND "CEE" TYPE.

We supply a spring to suit all requirements and loads, and if our standard springing does not suit you, or if your requirements are special, write and let us know and we shall be only too pleased to help you.

DIRTY CELLULOID.

Can be quickly and easily cleaned with Metal Polish, which will even remove discolouration in some cases. Always see that all traces of the liquid are removed when finally polishing.

VISIT OUR WORKS.

We are proud of our Works and organisation, and should be pleased to show you round and let you see for yourself the detailed work in a Watsonian Sidecar; or if you have any "grouses" bring them to us. We want to hear them and correct them for you, so avoiding any repetition in the future.

EXTRAS

MASCOT.

This attractive Watsonian Mascot (approx. 5 in. long), will give the finishing touch to your Sidecar. It is supplied Chromium Plated complete with bolt for immediate attachment. Price 5/9

LUGGAGE GRID.

Suitable for attachment to all our Models with the exception of "Schneider" and "Speed" Bodies.

Please specify Model of Body when ordering.

Price 8/6

LAMPS.

This modern Electric Lamp is fitted as standard to the Mudguards of all 1935 Chassis and is suitable for fixing to all Mudguards prior to that date.

Price 6/6

A FEW HINTS AND TIPS



MASCOT



LAMP

SPARES AND REPLACEMENT PRICES

Ref.		ATTACHMENTS AND FITTINGS :—	s. d.
A 1	P17	$\frac{1}{2}$ in. Hex. Plug Nut, cosletized	0 3
A 2	P18	$\frac{1}{2}$ in. Grover Spring Washer	0 1
A 3		Ball Plug and Union Nut, cosletized, state thread, size $1\frac{1}{2}$ in. or $1\frac{1}{4}$ in.	2 3
A 4	V16/17/18	Bolt-in Plug and Nut Washer, cosletized	2 0
A 5	37F	Chainstay rise Lug $1\frac{1}{2}$ in. \times $\frac{3}{4}$ in., $1\frac{1}{2}$ in. centres with Bolt	2 6
A 6		Chainstay Union Nut state thread, size $1\frac{1}{2}$ in. or $1\frac{1}{4}$ in.	1 3
A 7	37E	Swan neck Rise Lug, $1\frac{1}{2}$ in. \times $\frac{3}{4}$ in. \times $1\frac{1}{2}$ in. centres with Bolt	2 6
A 8		Chainstay Locking Nut, state thread size $1\frac{1}{2}$ in. or $1\frac{1}{4}$ in.	0 9
A 9	14	Seat Eye Lug, state bolt size, $\frac{7}{8}$ in. or $\frac{3}{4}$ in.	0 9
A10		Seat Wire with Nuts, state length and diameter	0 6
A11		Split Clip with steel tongue, sizes from $\frac{3}{4}$ in. to $1\frac{1}{2}$ in.	2 9
A12		Rudge Chainstay fitting	3 9
A13		Front Connection Clip, sizes from $1\frac{1}{2}$ in. to $1\frac{1}{4}$ in.	3 0
A14		Front Duplex Clip, complete with steel Plug, state make of machine and model	7 6
A15		Triumph Head Fitting. State model	7 0
A16		Chainstay Clip, state size and section	2 9
A17		Duplex Chainstay Fitting, state make of machine and model	6 6
A18		Steel Chainstay Connection to suit lug in frame	2 6
A19		Axle " Z " Lug, $1\frac{1}{2}$ \times $31/32$ in. centres from $2\frac{1}{2}$ in. to 6 in.	3 3
A21		Steel Eyebolt to suit lug in frame, state length and diam.	2 0
A22		Fourth point Attachment complete with Clips	10 0
A23		Bent Seat Arm complete with fittings	14 6
A24		Top half of Fourth Point or Seat Arm, less fittings	3 0
A25		Bottom half Fourth Point Arm, less fittings	3 6
A26		Bottom half Bent Seat Arm, less fittings	5 6
A27	DB	$1\frac{1}{2}$ in. Front Swan Neck Bend, state centres	6 0
A28		Swan Neck Bend with fitting for New Hudson	11 6
A29	VG	$1\frac{1}{2}$ in. front Swan Neck Bend, state centres	7 3
A30	67	$1\frac{1}{2}$ in. \times $1\frac{1}{2}$ in. Parallel Split Clip with Bolts	4 9
A33	PG	Square Bend, $1\frac{1}{2}$ in. Tube only	4 9
A34	25	Split Tongue Clip $1\frac{1}{2}$ in. or $1\frac{1}{4}$ in.	2 3
A35		Special Steel Fittings for " Z " Lugs, state machine	3 6
A36	19ND	Triumph Chainstay Attachment Lug, less fittings	2 3
A37		$\frac{5}{8}$ in. \times 2 in. Chainstay Bolt with Nut and Washer	1 3

BODY ATTACHMENTS AND FITTINGS :—

B 1	P4/19	Rear Bearer Bar for " X " and " D " Chassis	1 9
B 2	P4/20	Rear Bearer Bar for " V21", 23 in., 33 in. or " P " Chassis, state length between shoulders	2 6
B 9	P5	Front Body Plate complete, enamelled	3 0
B10	P6	Front Draw Pin with handles, state lengths	1 9
B11	P7	Draw Pin Handle only, state length	0 6
B12		23 in. and 33 in. Spring Bearer Bar, complete with Rubber Cones and 1 pair of Sliding Shackles	12 6
B13		Rear Bearer Bar for Ariel chassis	4 6

CHASSIS PARTS :—

C 1		$\frac{3}{8}$ in. Hex. Nut, cosletized	0 1
C 2		$\frac{7}{16}$ in. Hex. Nut, cosletized	0 1
C 3		$\frac{1}{2}$ in. Hex. Nut, cosletized	0 3
C 4		$\frac{5}{8}$ in. Hex. Nut, cosletized	0 3
C 5		$\frac{1}{2}$ in. Hex. Nut, cosletized	0 3
C 6		$\frac{1}{2}$ in. \times 3 in. or $2\frac{1}{2}$ in. Spring, holding down bolts and nuts	0 3
C 7		$\frac{1}{2}$ in. \times 2 in. Shackle Bolt and Nut	0 3
C 9		$\frac{1}{2}$ in. \times 2 in. Hex. Bolt and Nut	0 6
C10		$\frac{1}{2}$ in. \times $1\frac{1}{2}$ in. Hex. Bolt and Nut	0 4
C11	1.	Extractor Hook Bolt for " Kwikfit " Chassis	0 6
C12		Shouldered Bolt for " Kwikfit " Auxiliary Wheel	0 6
C13		$\frac{1}{2}$ in. \times $1\frac{1}{2}$ in. Hex. Bolts only	0 3
C14		$\frac{1}{2}$ in. \times 2 in. Seat Pin and Nut	0 3
C15		$\frac{1}{2}$ in. \times $1\frac{1}{2}$ in. Seat Pin and Nut	0 3
C16		$\frac{1}{2}$ in. \times $1\frac{1}{2}$ in. Seat Pin and Nut	0 2
C17		$\frac{1}{2}$ in. \times $1\frac{1}{2}$ in. or $1\frac{1}{4}$ in. Seat Pin and Nut	0 2
C18		Extractor Catch stamping	0 4
C19		Auxiliary Wheel, Spring, Bracket and all Bolts for " Kwikfit " Chassis	5 0
C20		Auxiliary Wheel only	2 6
C21		" U " Bolt with Spring Plate and Nuts	0 6
C22		Eyebolt $\frac{1}{2}$ in., state length	1 3
C23		Extractor Handle complete for " Kwikfit " Chassis	2 9
C24	VR	Chainstay Extension Piece with Nut and Washer	1 6
C26	26	$1\frac{1}{2}$ in. two-way Clip with Bolts	2 6

MUDGUARDS :—

M 1		Mudguard complete for " D " or " X " Chassis	11 9
M 2		Mudguard complete for " P " or Ariel or " V " Chassis	16 3
M 3		Mudguard complete with Clips for Cradle Chassis	9 9
M 4	D2	Mudguard Blade only for " D " or " X " Chassis	7 3
M 5		Mudguard Blade only for " P " or Ariel or " V " Chassis	9 3
M 6	P8	$\frac{3}{4}$ in. Mudguard Clips and Plates	0 4
M 7	V8	$31/32$ in. Mudguard Clip and Plates	0 4
M 8		$\frac{3}{4}$ in. Mudguard Stem with Bolt for " P " Chassis	1 6
M 9		$31/32$ in. Mudguard Stem with Bolt for " V " Chassis	1 6
M10	P2	$\frac{3}{4}$ in. \times $\frac{3}{4}$ in. Hex. Bolts cosletized for Mudguard Stem	0 3
M11		Lugs, Nos. 87B, C or D, enamelled	1 3
M12	42	Mudguard Front Twist Lug	1 0
M13	13V	$1\frac{1}{2}$ in. angle Mudguard Clip-Lug, with Bolt	2 6
M14		Horizontal Steel Strip for " X " Mudguard Blade	1 0

Watsonian
SIDECARS

26 **Barnstaple**

SPRINGS AND SPRING PARTS :—			s.	d.
S 1	D1	"Cee" Springs, two-leaf, short	each	5 0
S 2	H3	" " " three-leaf, short	"	5 9
S 3	H4	" " " four-leaf short	"	6 6
S 4		Elliptical Springs for "V23" "VC33" Chassis, 24 in. eyes ..	"	9 5
S 5	P13	Coil Springs, Front	"	0 6
S 6		Front Spring Assembly for "X" or "V" Chassis	"	4 6
S 7	E1	Stand Clip Spring $\frac{3}{4}$ in. \times $\frac{3}{4}$ in.	"	0 6
S 8	10	2 in. Fixed Shackle with Bolt	"	1 3
S10		Shackle Clip Springs for Pattern 10A	"	0 3
S11		"Kwikfit" Auxiliary Wheel Spring	"	0 6
S12		Squab Spring for Back Upholstery	"	0 3
S13		Wing Nut, Bridge Piece and Rivets for 10B Shackle ..	"	1 0
S14		Coil Spring Front for "V23" or "Y" Chassis	"	0 9
S15	Y	Laminated 7 leaf, $\frac{3}{8}$ in. \times $1\frac{1}{8}$ in. Springs	pair	26 6
S16	YT	Laminated 7 leaf, $\frac{3}{8}$ in. \times $1\frac{1}{8}$ in. Trailer Springs	"	28 9
S17		Rear Ariel four-leaf "Cee" Springs	each	7 6
S18		Front Ariel five-leaf "Cee" Springs	"	5 9

BODY PARTS :—			s.	d.
E 1		50 in. wide Leather Cloth	yard	6 0
E 2		Spring Seat Cushion	each	11 6
E 3		Waterproof Apron with Lift D.O.T. Fasteners	"	11 3
E 4		Turnbottoms, N.P. with screws	"	0 3
E 5		Lift D.O.T. Fasteners with Screw and Washer	"	0 6
E 6		Press Buttons, Cloth to Cloth or Cloth to Wood type ..	"	0 3
E 8		Door Handle, Chromium Plated	"	2 6
E 9		Locker Catch Chromium Plated for "Monarch" or "Albion" ..	"	2 0
E10		Dash holding down, or Toggle Catch, Chromium Plated ..	"	2 0
E11	58	Locker Key, cosletized	"	0 6
E12		Dash Clip Spring	"	0 6
E13		Chromium Plated Front Deck Rail for Cruiser	"	8 3
E14		Chromium Plated Rear Deck Rail for Cruiser or Launch ..	"	10 9
E15		Schneider Holding Rail, Chromium Plated	"	9 6
E16		Flag, complete, Chromium Plated for Cruiser	"	2 6
E17		Cowl, Chromium Plated	"	3 9
E18		Front Deck only for Cruiser and Launch Models	"	13 6

WHEELS AND WHEEL SPARE PARTS :—			s.	d.
W 1		Wheel 30 or 30B with Spindle, any size, 10g. Spokes ..	"	36 0
W 2		Wheel, H2, less spindle, 10g. Spokes, any size	"	30 0
W 3		Wheel, No. 2 or 4, less Spindle, 10g. Spokes, any size ..	"	28 0
W 4		Spindle, knock-out, for 30 or 30B Wheels	"	2 6
W 5		Tubular Spindle with Cones for No. 30 or 30 B Wheel ..	"	8 9
W 6		H2 or 3B Wheel Spindle with Cones	"	10 0
W 7		No. 2 or 4 Wheel Spindle with Cones	"	7 6
W 8	P22	Rim only, enamelled	"	9 6
W 9	P22	10g. Spokes and Nipples	"	0 2
W10		Cone for 30 or 30B Hub	"	2 0
W11		Cup for 30 or 30 B Hub	"	1 6
W12		Cone inside or outside, No. 3B	"	2 0
W14		Cups, inside or outside, No. 3B	"	1 3
W15		Cone, inside or outside, No. H2	"	1 9
W16		Cup, inside or outside, No. H2	"	1 0
W17		Cone, inside or outside No. 2	"	1 3
W18		Cup inside or outside, No. 2	"	0 9
W19		Dust Cap for No. 30 or 30 B Wheel	"	1 0
W20		Hub Cap for Nos. 2, 4 & H2, Wheels, Chromium Plated ..	"	2 6
W21		Washer, Lock Nut and Cotter Pin for all wheels	"	0 6
W22		Balls, Set for No. 30B Hub, $26\frac{1}{8}$ in.	"	1 1
W23		" " " 30 Hub, $24\frac{1}{8}$ in.	"	1 0
W24		" " " H2 Hub, $32\frac{1}{4}$ in.	"	0 6
W25		" " " 2 Hub, $28\frac{1}{4}$ in.	"	0 5
W26		Hub Lubricator Nipple	"	0 3
W27	3E7	Brake Hub Wheel complete with Spindle	"	63 0
W28		Controls with Pedal for Brake Wheel	"	11 0
W29	TLJT	Inside Taper Journal Bearing	"	5 0
W30	MJT	Outside Taper Journal Bearing	"	4 0
W31	W34	Hub Cap Chromium Plated for Journal Bearing Wheel ..	"	2 6
W32		Dust Cap for H2	"	1 0
W33		Nut $\frac{3}{4}$ in. Castle	"	0 9
W34		Journal Bearing Type Wheel, complete with Spindle ..	"	32 6

HOODS AND SCREENS :—			s.	d.
H 1		Hood complete for Coupe, "B", or "Monarch" Models ..	each	25 0
H 2		Windscreen for ditto	"	17 0
H 3		Windscreen for Launch Model	"	18 6
H 4		Hood with Envelope for Launch Model	"	17 6
H 5		Windscreen with Chromium Plated frame for Schneider ..	"	12 6
H 6		Hood with Fasteners for Tandem	"	14 9
H 7		Hood complete for Cruiser Model	"	11 6
H 8		Recovering Hood, Coupe, "B" or "Monarch"	"	12 6
H 9		Hood Joints, Black and Chromium Plated	pair	5 3
H10		Side Curtain for Tandem (state size)	each	13 9
H11		Windscreen, Safety Glass for Tandem	"	17 0
H12		Windscreen, Safety Glass for "Cambridge" and "Oxford" ..	"	15 6
H13		Hood holding down Springs with screw and distance piece ..	"	0 6
H14		Hood Action Springs	"	0 3
H15		Canopy holding down Springs, Albion or Cruiser	"	0 3
H16		Canopy Holding down Knobs	"	0 2
H17		Cruiser Cabin Top complete with Hood	"	66 6
H18		Albion Canopy complete	"	58 9
H18		Hood Covers for Albion Model	pair	12 6
H19		Celluloid Windscreen for "Greet" Model	each	8 3
H20		Celluloid Sidescreen for "Greet" Model	"	9 6

SPARES AND REPLACEMENT PRICES

Watsonian
SIDECARS

THE WATSONIAN GUARANTEE

NOTICE.

WE do not appoint agents for the sale on our behalf of our sidecars or other goods we assign the selling rights to motor cycle Dealers. No such Dealer is authorised to transact any business, give any warranty, make any representation or incur any liability on our behalf.

CONDITIONS OF GUARANTEE. If a defective part or accessory made by us should be found in our sidecars, or in any part or accessory made by us and supplied by way of exchange as before provided, it must be sent to us CARRIAGE PAID, and accompanied by an intimation from the owner that he desires to have it repaired or exchanged free of charge under our guarantee, and he must also furnish us at the same time with the number of the body and chassis, the date of the purchase or the date when the alleged defective part or accessory was exchanged as the case may be.

Failing compliance with the above, such articles will lie here at THE RISK OF THE OWNER, and this guarantee and any implied guarantee warranty or condition shall not be enforceable.

CONDITIONS OF SALE AND GUARANTEE. We give the following guarantee with our sidecars including all accessories and component parts other than tyres, lamps and other than accessories and component parts supplied to the order of the Purchaser and differing from those comprised in the standard specifications supplied with our sidecars, but including accessories and parts supplied by way of exchange as hereinafter provided. This guarantee is given in place of any implied conditions or warranties or any liabilities whatsoever statutory or otherwise; no guarantee except that hereinafter contained and no condition or warranty whatsoever statutory or otherwise is given or is to be implied, nor are we to be under any liability whatsoever except under the guarantee hereinafter contained. Any statement, description condition or representation contained in any catalogue, advertisement, leaflet or other publication shall not be construed as enlarging, varying or overriding anything herein contained. In the case of sidecars (a) which have been used for "hiring out" purposes or (b) any sidecar used for any dirt track, cinder track or grass track racing or competitions (or any competition of any kind within an enclosure for which a charge is made for admission to take part in or view the competition) or (c) sidecars from which the trade mark, name or manufacturing number has been altered or removed or (d) any sidecar in which parts have been used not supplied by or approved by the sidecar manufacturer, no guarantee, condition or warranty of any kind statutory or otherwise is given or is to be implied nor are we to be under any liability whatsoever in respect of any such sidecar.

We guarantee, subject to the conditions mentioned below, that all precautions which are usual and reasonable have been taken by us to secure excellence of materials and workmanship, but this guarantee is to extend and be in force for six months only from date of purchase, or date of exchange in case of any accessory or part supplied by way of exchange as hereinafter provided, and damages for which we make ourselves responsible under this guarantee are limited to the free repair of or supply of a new part or accessory in exchange for the part of the sidecar or accessory which may have proved defective. We undertake, subject to the conditions mentioned below, to make good in manner aforesaid any part or accessory covered by this guarantee which has proved defective within the said period of six months. We do not undertake to replace or refix, or bear the cost of replacing or refixing any such new part or accessory in the motor cycle, motor cycle combination or sidecar. As motor cycle combinations and sidecars are easily liable to derangement by neglect or misuse, this guarantee does not apply to defects caused by wear and tear, misuse or neglect.

The term "misuse" shall include amongst others the following acts:—

- 1.—The attaching of a sidecar to a motor cycle in such a manner as to cause damage or calculated to render the latter unsafe when ridden.
- 2.—The use of a motor cycle and sidecar combined, when carrying more persons or a greater weight than that for which the machine and/or sidecar was designed by the manufacturers.
- 3.—The attaching of a sidecar to a motor cycle by any form of attachment not provided, supplied, or approved by the manufacturers, or to a motor cycle which is not designed for such use.

REPAIRS. Any motor cycle, motor cycle combination or sidecar sent to us to be plated, enamelled or repaired will be repaired upon the following conditions, i.e., we guarantee that all precautions which are usual and reasonable have been taken by us to secure excellence of materials and workmanship, such guarantee to extend and be in force for three months only from the time such work shall have been executed, and this guarantee is in lieu and in exclusion of all conditions and warranties statutory or otherwise and all liabilities whatsoever and the damages recoverable are limited to the cost of any further work which may be necessary to amend and make good the work found to be defective.



Watsonian
SIDECAR

Barnstormers.co.nz

CLEANING WATSONIAN SIDECARS

IMPORTANT

FOR FABRIC BODIES.

We advise the use of Karpol for Fabric (in the Brown-patterned tin). This should be used regularly. It is advisable to apply the Karpol occasionally with a brush, so as to clean the grain thoroughly, and the surface should always be polished dry. Once or twice a year a thorough wash down with soap and water is recommended.

FOR COACH-PAINTED BODIES.

We advise the use of Karpol for Paint and Varnish (in the Red-striped tin). This should be applied sparingly and used regularly.